

Recombinant Human KIR2DL4 Protein (Trp22-His242), C-His tagged

Cat. No. KIR2DL4-2686H Lot. No. (See product label)

SPECIFICATION

Product Overview	Recombinant human KIR2DL4 (Trp22-His242) protein fused with the C-terminal His tag was expressed in Mammalian cells.
Species	Human
Source	Mammalian Cells
ProteinLength	Trp22-His242
Molecular Mass	24.31 kDa
Purity	>90 % as determined by SDS-PAGE.
Notes	For research use only.
Storage	Use a manual defrost freezer and avoid repeated freeze thaw cycles. Store at 2 to 8 centigrade for one week. Store at -20 to -80 centigrade for twelve months from the date of receipt.
Storage Buffer	Supplied as solution form in PBS or lyophilized from PBS.
Reconstitution	Reconstitute in sterile water for a stock solution.
Shipping	In general, proteins are provided as lyophilized powder/frozen liquid. They are

 Tel: 1-631-559-9269 1-516-512-3133

 Email: info@creative-biomart.com  Fax: 1-631-938-8127

 45-1 Ramsey Road, Shirley, NY 11967, USA

shipped out with dry ice/blue ice unless customers require otherwise.

GENE INFORMATION

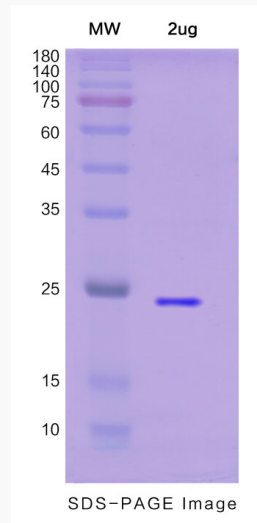
Gene Name	KIR2DL4 killer cell immunoglobulin-like receptor, two domains, long cytoplasmic tail, 4 [Homo sapiens (human)]
Official Symbol	KIR2DL4
Synonyms	KIR2DL4; killer cell immunoglobulin-like receptor, two domains, long cytoplasmic tail, 4; killer cell immunoglobulin-like receptor 2DL4; 15.212; 103AS; CD158D; KIR-103AS; NK cell receptor; killer Ig receptor; CD158 antigen-like family member D; MHC class I NK cell receptor KIR103AS; killer cell inhibitory receptor 103AS; natural killer cell inhibitory receptor; G9P; KIR103; KIR103AS;
Gene ID	3805
mRNA Refseq	NM_001080770
Protein Refseq	NP_001074239
MIM	604945
UniProt ID	Q99706

 Tel: 1-631-559-9269 1-516-512-3133

 Email: info@creative-biomart.com  Fax: 1-631-938-8127

 45-1 Ramsey Road, Shirley, NY 11967, USA

SDS-PAGE



 Tel: 1-631-559-9269 1-516-512-3133

 Email: info@creative-biomart.com  Fax: 1-631-938-8127

 45-1 Ramsey Road, Shirley, NY 11967, USA