

Recombinant Human KIR2DL5A Protein, His22-His240, C-His-Avi tagged, Biotinylated

Cat. No. KIR2DL5A-279H Lot. No. (See product label)

SPECIFICATION

Product Overview

Recombinant human KIR2DL5-C-His-Avi protein was developed from HEK293 and has a target region of C-His-Avi.

Species

Human

Source

HEK293

ProteinLength

His22-His240

Description

Killer cell immunoglobulin-like receptors (KIRs) are transmembrane glycoproteins expressed by natural killer cells and subsets of T cells. The KIR genes are polymorphic and highly homologous and they are found in a cluster on chromosome 19q13.4 within the 1 Mb leukocyte receptor complex (LRC). The gene content of the KIR gene cluster varies among haplotypes, although several "framework" genes are found in all haplotypes (KIR3DL3, KIR3DP1, KIR3DL4, KIR3DL2). The KIR proteins are classified by the number of extracellular immunoglobulin domains (2D or 3D) and by whether they have a long (L) or short (S) cytoplasmic domain. KIR proteins with the long cytoplasmic domain transduce inhibitory signals upon ligand binding via an immune tyrosine-based inhibitory motif (ITIM), while KIR proteins with the short cytoplasmic domain lack the ITIM motif and instead associate with the TYRO protein tyrosine kinase binding protein to transduce activating signals. The ligands for several KIR proteins are subsets of HLA class I molecules; thus, KIR proteins are thought to play an important role in regulation of the immune response.

 Tel: 1-631-559-9269 1-516-512-3133

 Email: info@creative-biomart.com  Fax: 1-631-938-8127

 45-1 Ramsey Road, Shirley, NY 11967, USA

Conjugation/Label	Biotin
Form	Lyophilised
Endotoxin	Endotoxin level was found to be less than 0.1 ng/μg (1 EU/μg).
Notes	FOR RESEARCH USE ONLY (RUO).
Storage	The lyophilized protein is stable for at least 1 year from date of receipt at -20 centigrade.
Storage Buffer	Lyophilised from 0.2 μm filtered PBS solution pH 7.4. Upon receipt centrifuge vial to ensure maximal product extraction, recommended: 20 sec, 5K RPM
Conjugation	Biotin

GENE INFORMATION

Gene Name	KIR2DL5A killer cell immunoglobulin like receptor, two Ig domains and long cytoplasmic tail 5A [Homo sapiens (human)]
Official Symbol	KIR2DL5A
Synonyms	KIR2DL5A; killer cell immunoglobulin like receptor, two Ig domains and long cytoplasmic tail 5A; CD158F; KIR2DL5; KIR2DL5.1; KIR2DL5.3; killer cell immunoglobulin-like receptor 2DL5A; killer cell immunoglobulin-like receptor KIR2DL5A; killer cell immunoglobulin-like receptor, two domains, long cytoplasmic tail, 5; killer cell immunoglobulin-like receptor, two domains, long cytoplasmic tail, 5A
Gene ID	57292

 Tel: 1-631-559-9269 1-516-512-3133

 Email: info@creative-biomart.com  Fax: 1-631-938-8127

 45-1 Ramsey Road, Shirley, NY 11967, USA

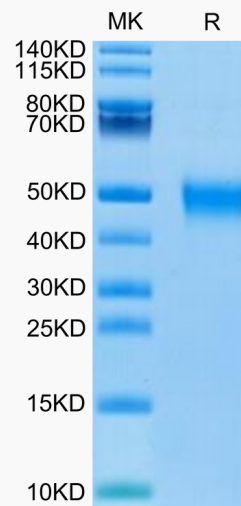
mRNA Refseq [NM_020535](#)

Protein Refseq [NP_065396](#)

MIM [605305](#)

UniProt ID [Q8N109](#)

**Biotinylated Human
KIR2DL5 on Tris-Bis
PAGE under reduced
condition. The purity
is greater than 95%.**



Tel: 1-631-559-9269 1-516-512-3133

Email: info@creative-biomart.com Fax: 1-631-938-8127

45-1 Ramsey Road, Shirley, NY 11967, USA