

# Recombinant Human KIR2DS1 Protein (22-245 aa), His-tagged

Cat. No. KIR2DS1-1014H Lot. No. (See product label)

## SPECIFICATION

<b>Product Overview</b>	Recombinant Human KIR2DS1 Protein (22-245 aa) is produced by E. coli expression system. This protein is fused with a 6xHis tag at the N-terminal. Research Area: Immunology. Protein Description: Partial.
<b>Species</b>	Human
<b>Source</b>	E.coli
<b>ProteinLength</b>	22-245 aa
<b>Description</b>	Receptor on natural killer (NK) cells for HLA-C alleles. Does not inhibit the activity of NK cells.
<b>Form</b>	Tris-based buffer, 50% glycerol
<b>Molecular Mass</b>	28.8 kDa
<b>AA Sequence</b>	HEGVHRKPSLLAHPGRLVKSEETVILQCWSDVMFEHFLLHREGMFNDTLRLIGEHH DGVSKANFSISRMRQDLAGTYRCYGSVTHSPYQLSAPSDPLDIVIIGLYEKPSLSAQP GPTVLAGENVTLSCSSRSSYDMYHLSREGEAHERRLPAGTKVNGTFQANFPLGPAT HGGTYRCFGSFRDSPYEWSKSSDLLVSVTGNPNSNSWPSPTPEPSETGNPRHLH
<b>Purity</b>	> 90% as determined by SDS-PAGE.
<b>Notes</b>	Repeated freezing and thawing is not recommended. Store working aliquots at 4

 Tel: 1-631-559-9269 1-516-512-3133

 Email: [info@creative-biomart.com](mailto:info@creative-biomart.com)  Fax: 1-631-938-8127

 45-1 Ramsey Road, Shirley, NY 11967, USA

centigrade for up to one week.

**Storage**

The shelf life is related to many factors, storage state, buffer ingredients, storage temperature and the stability of the protein itself. Generally, the shelf life of liquid form is 6 months at -20 centigrade/-80 centigrade. The shelf life of lyophilized form is 12 months at -20 centigrade/-80 centigrade.

**Concentration**

A hardcopy of COA with concentration instruction is sent along with the products.

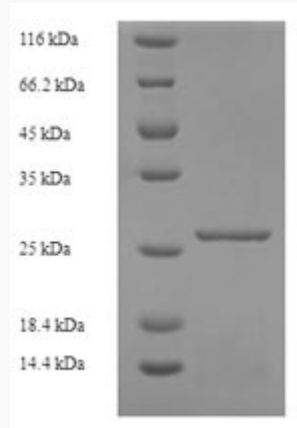
## GENE INFORMATION

<b>Gene Name</b>	KIR2DS1 killer cell immunoglobulin-like receptor, two domains, short cytoplasmic tail, 1 [ Homo sapiens ]
<b>Official Symbol</b>	KIR2DS1
<b>Synonyms</b>	KIR2DS1; CD158H; EB6ActI; EB6ActII; KIR2DL1-KIR2DS1; p50.1; CD158a;
<b>Gene ID</b>	3806
<b>mRNA Refseq</b>	NM_014512
<b>Protein Refseq</b>	NP_055327
<b>MIM</b>	604952
<b>UniProt ID</b>	Q14954

 Tel: 1-631-559-9269 1-516-512-3133

 Email: [info@creative-biomart.com](mailto:info@creative-biomart.com)  Fax: 1-631-938-8127

 45-1 Ramsey Road, Shirley, NY 11967, USA



(Tris-Glycine gel) Discontinuous SDS-PAGE (reduced) with 5% enrichment gel and 15% separation gel.

 Tel: 1-631-559-9269 1-516-512-3133

 Email: [info@creative-biomart.com](mailto:info@creative-biomart.com)  Fax: 1-631-938-8127

 45-1 Ramsey Road, Shirley, NY 11967, USA