

## Recombinant Human KIR2DS2 Protein, C-His-tagged

Cat. No. KIR2DS2-002H Lot. No. (See product label)

### SPECIFICATION

<b>Product Overview</b>	Recombinant Human KIR2DS2 Protein with C-His tag was expressed in E. coli.
<b>Species</b>	Human
<b>Source</b>	E.coli
<b>Description</b>	KIR2DS2, receptor on natural killer (NK) cells for HLA-C alleles. Does not inhibit the activity of NK cells.
<b>Molecular Mass</b>	~25 kDa
<b>AA Sequence</b>	HEGVHRKPSLLAHPGPLVKSEETVILQCWSDVRFEHLLHREGKYKDTLHLIGEHHD GVSKANFSIGPMMQDLAGTYRCYGSVTHSPYQLSAPSDPLDIVITGLYEKPSLSAQP GPTVLAGESVTLSCSSRSSYDMYHLSREGEAHERRFSAGPKVNGTFQADFPLGPAT HGGTYRCFGSFRDSPYEWSNSSDPLLVSVTGNPSNSWSPTEPSSKTGNPRHLH
<b>Purity</b>	Transferred into competent cells and the supernatant was purified by NI column affinity chromatography and the purity is > 85% (by SDS-PAGE).
<b>Notes</b>	For research use only, not for use in diagnostic procedure.
<b>Storage</b>	Store at 4 centigrade short term. Aliquot and store at -20 centigrade long term. Avoid freeze-thaw cycles.
<b>Concentration</b>	≥0.5 mg/mL

 Tel: 1-631-559-9269 1-516-512-3133

 Email: [info@creative-biomart.com](mailto:info@creative-biomart.com)  Fax: 1-631-938-8127

 45-1 Ramsey Road, Shirley, NY 11967, USA

**Storage Buffer**                      PBS, 4M Urea, pH7.4

## GENE INFORMATION

**Gene Name**                              KIR2DS2 killer cell immunoglobulin-like receptor, two domains, short cytoplasmic tail, 2 [ Homo sapiens (human) ]

**Official Symbol**                      KIR2DS2

**Synonyms**                              KIR2DS2; killer cell immunoglobulin-like receptor, two domains, short cytoplasmic tail, 2; killer cell immunoglobulin-like receptor 2DS2; 183ActI; CD158J; cl 49; nkat5; NKAT-5; p58 KIR; 1060P11.9.2; NK receptor 183 ActI; p58 NK receptor CL-49; MHC class I NK cell receptor; killer-cell Ig-like receptor; CD158 antigen-like family member J; natural killer associated transcript 5; natural killer-associated transcript 5; natural killer cell inhibitory receptor; p58 killer cell inhibitory receptor KIR-K7a; p58 natural killer cell receptor clone CL-49; killer-cell immunoglobulin-like receptor two domains short tail 2 protein; NKAT5; cl-49; CD158b; MGC120018; MGC120020; MGC149477; MGC149478;

**Gene ID**                                      100132285

**mRNA Refseq**                              NM\_012312

**Protein Refseq**                              NP\_036444

**MIM**    604953

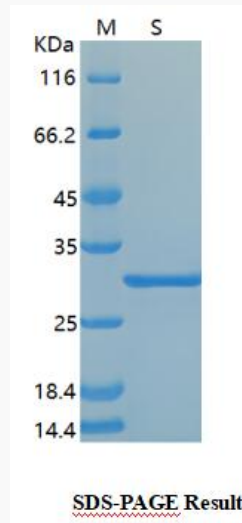
**UniProt ID**                                      P43631

 Tel: 1-631-559-9269    1-516-512-3133

 Email: [info@creative-biomart.com](mailto:info@creative-biomart.com)     Fax: 1-631-938-8127

 45-1 Ramsey Road, Shirley, NY 11967, USA

**SDS-PAGE**



 Tel: 1-631-559-9269 1-516-512-3133

 Email: [info@creative-biomart.com](mailto:info@creative-biomart.com)  Fax: 1-631-938-8127

 45-1 Ramsey Road, Shirley, NY 11967, USA