

Recombinant Human KIR2DS2 Protein (His22-Glu291), N-GST tagged

Cat. No. KIR2DS2-0908H Lot. No. (See product label)

SPECIFICATION

| | |
|-------------------------|---|
| Product Overview | Recombinant Human CD158j/KIR2DS2 (His22-Glu291) fused with the N-GST tag was expressed in E. coli. |
| Species | Human |
| Source | E.coli |
| ProteinLength | His22-Glu291 |
| Form | Lyophilized powder/frozen liquid |
| Molecular Mass | 56.57 kDa |
| Purity | >90% as determined by SDS-PAGE. |
| Notes | For research use only. |
| Storage | Use a manual defrost freezer and avoid repeated freeze thaw cycles. Store at 2 to 8 centigrade for one week. Store at -20 to -80 centigrade for twelve months from the date of receipt. |
| Storage Buffer | 0.01M PBS, pH 7.4, 0.02% NLS |
| Reconstitution | Reconstitute in sterile water for a stock solution. |

 Tel: 1-631-559-9269 1-516-512-3133

 Email: info@creative-biomart.com  Fax: 1-631-938-8127

 45-1 Ramsey Road, Shirley, NY 11967, USA

Shipping They are shipped out with dry ice/blue ice unless customers require otherwise.

GENE INFORMATION

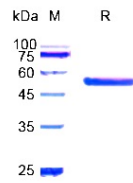
| | |
|------------------------|--|
| Gene Name | KIR2DS2 killer cell immunoglobulin-like receptor, two domains, short cytoplasmic tail, 2 [Homo sapiens (human)] |
| Official Symbol | KIR2DS2 |
| Synonyms | KIR2DS2; killer cell immunoglobulin-like receptor, two domains, short cytoplasmic tail, 2; killer cell immunoglobulin-like receptor 2DS2; 183ActI; CD158J; cl 49; nkat5; NKAT-5; p58 KIR; 1060P11.9.2; NK receptor 183 ActI; p58 NK receptor CL-49; MHC class I NK cell receptor; killer-cell Ig-like receptor; CD158 antigen-like family member J; natural killer associated transcript 5; natural killer-associated transcript 5; natural killer cell inhibitory receptor; p58 killer cell inhibitory receptor KIR-K7a; p58 natural killer cell receptor clone CL-49; killer-cell immunoglobulin-like receptor two domains short tail 2 protein; NKAT5; cl-49; CD158b; MGC120018; MGC120020; MGC149477; MGC149478; |
| Gene ID | 100132285 |
| mRNA Refseq | NM_012312 |
| Protein Refseq | NP_036444 |
| MIM | 604953 |
| UniProt ID | P43631 |

 Tel: 1-631-559-9269 1-516-512-3133

 Email: info@creative-biomart.com  Fax: 1-631-938-8127

 45-1 Ramsey Road, Shirley, NY 11967, USA

SDS-PAGE



 Tel: 1-631-559-9269 1-516-512-3133

 Email: info@creative-biomart.com  Fax: 1-631-938-8127

 45-1 Ramsey Road, Shirley, NY 11967, USA