

Recombinant Full Length Human KIR2DS2 Protein, C-Flag-tagged

Cat. No. KIR2DS2-1497HFL Lot. No. (See product label)

SPECIFICATION

Product Overview

Recombinant Full Length Human KIR2DS2 Protein, fused to Flag-tag at C-terminus, was expressed in Mammalian cells.

Species

Human

Source

Mammalian Cells

Description

Killer cell immunoglobulin-like receptors (KIRs) are transmembrane glycoproteins expressed by natural killer cells and subsets of T cells. The KIR genes are polymorphic and highly homologous and they are found in a cluster on chromosome 19q13.4 within the 1 Mb leukocyte receptor complex (LRC). The gene content of the KIR gene cluster varies among haplotypes, although several "framework" genes are found in all haplotypes (KIR3DL3, KIR3DP1, KIR3DL4, KIR3DL2). The KIR proteins are classified by the number of extracellular immunoglobulin domains (2D or 3D) and by whether they have a long (L) or short (S) cytoplasmic domain. KIR proteins with the long cytoplasmic domain transduce inhibitory signals upon ligand binding via an immune tyrosine-based inhibitory motif (ITIM), while KIR proteins with the short cytoplasmic domain lack the ITIM motif and instead associate with the TYRO protein tyrosine kinase binding protein to transduce activating signals. The ligands for several KIR proteins are subsets of HLA class I molecules; thus, KIR proteins are thought to play an important role in regulation of the immune response. This gene represents a haplotype-specific family member that encodes a protein with a short cytoplasmic tail. Alternative splicing results in multiple transcript variants.

 Tel: 1-631-559-9269 1-516-512-3133

 Email: info@creative-biomart.com  Fax: 1-631-938-8127

 45-1 Ramsey Road, Shirley, NY 11967, USA

Form	25 mM Tris HCl, pH 7.3, 100 mM glycine, 10% glycerol.
Molecular Mass	31.5 kDa
AA Sequence	MSLTVVSMACVGGFFLLQGAWPHEGVHRKPSLLAHPGPLVKSEETVILQCWSDVRFE HFLHREGKYKDTL HLI GEHHDGVSKANFSIGPMMQDLAGTYRCYGSVTHSPYQLS APSDPLDIVITGLYEKPSLSAQPGPTVL AGESVTLSCSSRSSYDMYHLSREGEAHER RFSAGPKVNGTFQADFP LGPAT HGGTYRCFGSFRDSPYEWS NSSDPLLVSVTGNP SNSWSPTEPSSKTGNPRHLHVLIGTSVVKIPFTILLFFLLHRWCSNKKNAAVMDQ EPAGNRTVNSEDSDEQDHQEVSYATRTRPLEQKLISEEDLAANDILDYKDDDDKV
Purity	> 80% as determined by SDS-PAGE and Coomassie blue staining.
Stability	Stable for 12 months from the date of receipt of the product under proper storage and handling conditions. Avoid repeated freeze-thaw cycles.
Storage	Store at -80 centigrade.
Concentration	>50 ug/mL as determined by microplate BCA method.
Preparation	Recombinant protein was captured through anti-DDK affinity column followed by conventional chromatography steps.
Full Length	Full L.

GENE INFORMATION

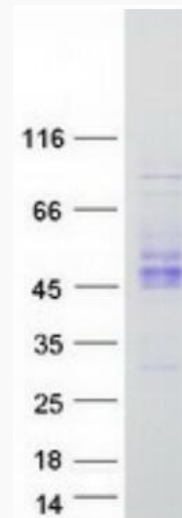
Gene Name	KIR2DS2 killer cell immunoglobulin like receptor, two Ig domains and short cytoplasmic tail 2 [Homo sapiens (human)]
Official Symbol	KIR2DS2

 Tel: 1-631-559-9269 1-516-512-3133

 Email: info@creative-biomart.com  Fax: 1-631-938-8127

 45-1 Ramsey Road, Shirley, NY 11967, USA

Synonyms	NKAT5; cl-49; CD158J; CD158b; NKAT-5; 183Act1; KIR2DL1; KIR-2DS2
Gene ID	100132285
mRNA Refseq	NM_012312.4
Protein Refseq	NP_036444.1
UniProt ID	P43631



Coomassie blue staining of purified KIR2DS2 protein.

 Tel: 1-631-559-9269 1-516-512-3133

 Email: info@creative-biomart.com  Fax: 1-631-938-8127

 45-1 Ramsey Road, Shirley, NY 11967, USA