

Recombinant Human KIR2DS2 Protein, Myc/DDK-tagged, C13 and N15-labeled

Cat. No. KIR2DS2-6466H Lot. No. (See product label)

SPECIFICATION

Product Overview KIR2DS2 MS Standard C13 and N15-labeled recombinant protein (NP_036444) with a C-terminal MYC/DDK tag, was expressed in HEK293 cells.

Species Human

Source HEK293

Description

Killer cell immunoglobulin-like receptors (KIRs) are transmembrane glycoproteins expressed by natural killer cells and subsets of T cells. The KIR genes are polymorphic and highly homologous and they are found in a cluster on chromosome 19q13.4 within the 1 Mb leukocyte receptor complex (LRC). The gene content of the KIR gene cluster varies among haplotypes, although several "framework" genes are found in all haplotypes (KIR3DL3, KIR3DP1, KIR3DL4, KIR3DL2). The KIR proteins are classified by the number of extracellular immunoglobulin domains (2D or 3D) and by whether they have a long (L) or short (S) cytoplasmic domain. KIR proteins with the long cytoplasmic domain transduce inhibitory signals upon ligand binding via an immune tyrosine-based inhibitory motif (ITIM), while KIR proteins with the short cytoplasmic domain lack the ITIM motif and instead associate with the TYRO protein tyrosine kinase binding protein to transduce activating signals. The ligands for several KIR proteins are subsets of HLA class I molecules; thus, KIR proteins are thought to play an important role in regulation of the immune response. This gene represents a haplotype-specific family member that encodes a protein with a short cytoplasmic tail. Alternative splicing results in multiple transcript variants.

 Tel: 1-631-559-9269 1-516-512-3133

 Email: info@creative-biomart.com  Fax: 1-631-938-8127

 45-1 Ramsey Road, Shirley, NY 11967, USA

Molecular Mass	33.5 kDa
AA Sequence	MSLTVVSMACVGGFFLLQGAWPHEGVHRKPSLLAHPGPLVKSEETVILQCWSDVRFE HFLHREGKYKDTLHLIGEHHDGVSKANFSIGPMMQDLAGTYRCYGSVTHSPYQLS APSDPLDIVITGLYEKPSLSAQPGPTVLAGESVTLSCSSRSSYDMYHLSREGEAHER RFSAGPKVNGTFQADFPLGPATHGGTYRCFGSFRDSPYEWSNSSDPLLVSVTGNP SNSWPSPTPESSKTGNPRHLHVLIGTSVVKIPFTILLFFLLHRWC SNKKNAAVMDQE PAGNRTVNSEDSDEQDHQEVSYATRTRPLEQKLISEEDLAANDILDYKDDDDKV
Purity	> 80% as determined by SDS-PAGE and Coomassie blue staining
Stability	Stable for 3 months from receipt of products under proper storage and handling conditions.
Storage	Store at -80 centigrade. Avoid repeated freeze-thaw cycles.
Concentration	50 µg/mL as determined by BCA
Storage Buffer	100 mM glycine, 25 mM Tris-HCl, pH 7.3.

GENE INFORMATION

Gene Name	KIR2DS2 killer cell immunoglobulin like receptor, two Ig domains and short cytoplasmic tail 2 [Homo sapiens (human)]
Official Symbol	KIR2DS2
Synonyms	KIR2DS2; killer cell immunoglobulin-like receptor, two domains, short cytoplasmic tail, 2; killer cell immunoglobulin-like receptor 2DS2; 183ActI; CD158J; cl 49; nkat5; NKAT-5; p58 KIR; 1060P11.9.2; NK receptor 183 ActI; p58 NK receptor CL-49; MHC class I NK cell receptor; killer-cell Ig-like receptor; CD158 antigen-like family member

 Tel: 1-631-559-9269 1-516-512-3133

 Email: info@creative-biomart.com  Fax: 1-631-938-8127

 45-1 Ramsey Road, Shirley, NY 11967, USA

J; natural killer associated transcript 5; natural killer-associated transcript 5; natural killer cell inhibitory receptor; p58 killer cell inhibitory receptor KIR-K7a; p58 natural killer cell receptor clone CL-49; killer-cell immunoglobulin-like receptor two domains short tail 2 protein; NKAT5; cl-49; CD158b; MGC120018; MGC120020; MGC149477; MGC149478;

Gene ID [100132285](#)

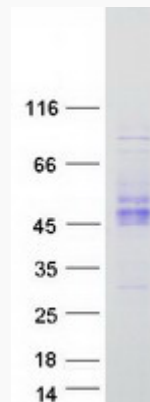
mRNA Refseq [NM_012312](#)

Protein Refseq [NP_036444](#)

MIM [604953](#)

UniProt ID [P43631](#)

SDS-PAGE



 Tel: 1-631-559-9269 1-516-512-3133

 Email: info@creative-biomart.com  Fax: 1-631-938-8127

 45-1 Ramsey Road, Shirley, NY 11967, USA