

Recombinant Human KIR2DS3 Protein (22-245 aa), His-SUMO-Myc-tagged

Cat. No. KIR2DS3-2313H Lot. No. (See product label)

SPECIFICATION

Product Overview Recombinant Human KIR2DS3 Protein (22-245 aa) is produced by E. coli expression system. This protein is fused with a 10xHis-SUMO tag at the N-terminal and a Myc tag at the C-terminal. Protein Description: Partial.

Species Human

Source E.coli

ProteinLength 22-245 aa

Description Receptor on natural killer (NK) cells for HLA-C alleles. Does not inhibit the activity of NK cells.

Form Tris-based buffer,50% glycerol

Molecular Mass 44.7 kDa

AA Sequence
 HEGFRRKPSLLAHPGRLVKSEETVILQCWSDVMFEHFLLHREGTFNDTLRLIGEHLID
 GVSKANFSIGRMRQDLAGTYRCYGSVPHSPYQFSAPSDPLDIVITGLYEKPSLSAQP
 GPTVLAGESVTLSCSSWSSYDMYHLSTEGEAHERRFSAGPKVNGTFQADFLGPA
 TQGGTYRCFGSFHDSPYEWKSSDLLVSVTGNPSNSWPSPTPESSKTGNPRHLH

Purity > 85% as determined by SDS-PAGE.

 Tel: 1-631-559-9269 1-516-512-3133

 Email: info@creative-biomart.com  Fax: 1-631-938-8127

 45-1 Ramsey Road, Shirley, NY 11967, USA

Notes	Repeated freezing and thawing is not recommended. Store working aliquots at 4 centigrade for up to one week.
Storage	The shelf life is related to many factors, storage state, buffer ingredients, storage temperature and the stability of the protein itself. Generally, the shelf life of liquid form is 6 months at -20 centigrade/-80 centigrade. The shelf life of lyophilized form is 12 months at -20 centigrade/-80 centigrade.
Concentration	A hardcopy of COA will be sent along with the products. Please refer to it for detailed information.

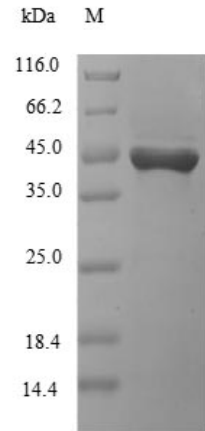
GENE INFORMATION

Gene Name	KIR2DS3 killer cell immunoglobulin like receptor, two Ig domains and short cytoplasmic tail 3 [Homo sapiens (human)]
Official Symbol	KIR2DS3
Synonyms	KIR2DS3; NKAT7;
Gene ID	3808
mRNA Refseq	NM_012313
Protein Refseq	NP_036445
UniProt ID	Q14952

 Tel: 1-631-559-9269 1-516-512-3133

 Email: info@creative-biomart.com  Fax: 1-631-938-8127

 45-1 Ramsey Road, Shirley, NY 11967, USA



(Tris-Glycine gel) Discontinuous SDS-PAGE (reduced) with 5% enrichment gel and 15% separation gel.

Tel: 1-631-559-9269 1-516-512-3133

Email: info@creative-biomart.com Fax: 1-631-938-8127

45-1 Ramsey Road, Shirley, NY 11967, USA