

Recombinant Human KIR2DS3 Protein (22-245 aa), His-tagged

Cat. No. KIR2DS3-2461H Lot. No. (See product label)

SPECIFICATION

Product Overview	Recombinant Human KIR2DS3 Protein (22-245 aa) is produced by Yeast expression system. This protein is fused with a 6xHis tag at the N-terminal. Protein Description: Partial.
Species	Human
Source	Yeast
ProteinLength	22-245 aa
Description	Receptor on natural killer (NK) cells for HLA-C alleles. Does not inhibit the activity of NK cells.
Form	Tris-based buffer,50% glycerol
Molecular Mass	26.7 kDa
AA Sequence	HEGFRRKPSLLAHPGRLVKSEETVILQCWSDVMFEHFLLHREGTFNDTLRLIGEHI GVSKANFSIGRMRQDLAGTYRCYGSVPHSPYQFSAPSDPLDIVITGLYEKPSLSAQP GPTVLAGESVTLSCSSWSSYDMYHLSTEGEAHERRFSAGPKVNGTFQADFPLGPA TQGGTYRCFGSFHDSPYEWSSKSSDLLVSVTGNPNSNSWPSPTTEPSSKTGNPRHLH
Purity	> 90% as determined by SDS-PAGE.
Notes	Repeated freezing and thawing is not recommended. Store working aliquots at 4

 Tel: 1-631-559-9269 1-516-512-3133

 Email: info@creative-biomart.com  Fax: 1-631-938-8127

 45-1 Ramsey Road, Shirley, NY 11967, USA

centigrade for up to one week.

Storage

The shelf life is related to many factors, storage state, buffer ingredients, storage temperature and the stability of the protein itself. Generally, the shelf life of liquid form is 6 months at -20 centigrade/-80 centigrade. The shelf life of lyophilized form is 12 months at -20 centigrade/-80 centigrade.

Concentration

A hardcopy of COA will be sent along with the products. Please refer to it for detailed information.

GENE INFORMATION

Gene Name

KIR2DS3 killer cell immunoglobulin like receptor, two Ig domains and short cytoplasmic tail 3 [Homo sapiens (human)]

Official Symbol

KIR2DS3

Synonyms

KIR2DS3; NKAT7;

Gene ID

3808

mRNA Refseq

NM_012313

Protein Refseq

NP_036445

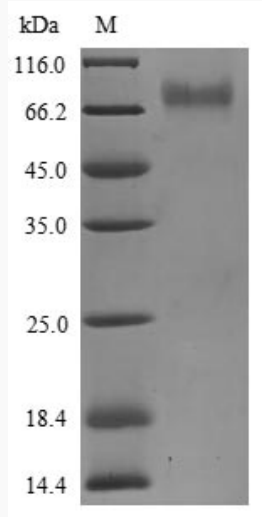
UniProt ID

Q14952

 Tel: 1-631-559-9269 1-516-512-3133

 Email: info@creative-biomart.com  Fax: 1-631-938-8127

 45-1 Ramsey Road, Shirley, NY 11967, USA



(Tris-Glycine gel) Discontinuous SDS-PAGE (reduced) with 5% enrichment gel and 15% separation gel.

 Tel: 1-631-559-9269 1-516-512-3133

 Email: info@creative-biomart.com  Fax: 1-631-938-8127

 45-1 Ramsey Road, Shirley, NY 11967, USA