

Recombinant Human KIR2DS4 Protein (Gln22-Ser302), N-His tagged

Cat. No. KIR2DS4-1340H Lot. No. (See product label)

SPECIFICATION

Product Overview	Recombinant Human CD158i/KIR2DS4 (Gln22-Ser302) fused with the N-His tag was expressed in E. coli.
Species	Human
Source	E.coli
ProteinLength	Gln22-Ser302
Form	Lyophilized powder/frozen liquid
Molecular Mass	33.35 kDa
Purity	>90% as determined by SDS-PAGE.
Notes	For research use only.
Storage	Use a manual defrost freezer and avoid repeated freeze thaw cycles. Store at 2 to 8 centigrade for one week. Store at -20 to -80 centigrade for twelve months from the date of receipt.
Storage Buffer	0.01M PBS, pH 7.4, 0.02% NLS
Reconstitution	Reconstitute in sterile water for a stock solution.

 Tel: 1-631-559-9269 1-516-512-3133

 Email: info@creative-biomart.com  Fax: 1-631-938-8127

 45-1 Ramsey Road, Shirley, NY 11967, USA

Shipping They are shipped out with dry ice/blue ice unless customers require otherwise.

GENE INFORMATION

Gene Name	KIR2DS4 killer cell immunoglobulin-like receptor, two domains, short cytoplasmic tail, 4 [Homo sapiens (human)]
Official Symbol	KIR2DS4
Synonyms	KIR2DS4; killer cell immunoglobulin-like receptor, two domains, short cytoplasmic tail, 4; killer cell immunoglobulin-like receptor 2DS4; CD158i; cl 39; KKA3; nkat8; NKAT-8; KIR antigen 2DS4; p58 NK receptor CL-39/CL-17; MHC class I NK cell receptor; killer inhibitory receptor 4-1-2; CD158 antigen-like family member I; natural killer-associated transcript 8; natural killer cell inhibitory receptor; P58 natural killer cell receptor clones CL-39/CL-17; KIR1D; NKAT8; CD158I; KIR412; MGC120019; MGC125315; MGC125317;
Gene ID	3809
mRNA Refseq	NM_012314
Protein Refseq	NP_036446
MIM	604955
UniProt ID	P43632

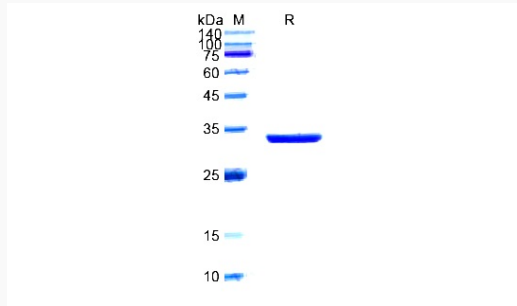
 Tel: 1-631-559-9269 1-516-512-3133

 Email: info@creative-biomart.com  Fax: 1-631-938-8127

 45-1 Ramsey Road, Shirley, NY 11967, USA



SDS-PAGE



Tel: 1-631-559-9269 1-516-512-3133

Email: info@creative-biomart.com Fax: 1-631-938-8127

45-1 Ramsey Road, Shirley, NY 11967, USA