

# Recombinant Human KIR2DS4 Protein (Met1-His245), C-His tagged

**Cat. No.** KIR2DS4-4342H    **Lot. No.** (See product label)

## SPECIFICATION

<b>Product Overview</b>	Recombinant human KIR2DS4 (Met1-His245) fused with the C-terminal His tag was expressed in Mammalian cells.
<b>Species</b>	Human
<b>Source</b>	Mammalian Cells
<b>ProteinLength</b>	Met1-His245
<b>Form</b>	Lyophilized powder/frozen liquid
<b>Molecular Mass</b>	26.95 kDa
<b>Endotoxin</b>	< 1.0 EU/μg of the protein as determined by the LAL method.
<b>Purity</b>	>90% as determined by SDS-PAGE.
<b>Notes</b>	For research use only.
<b>Storage</b>	Use a manual defrost freezer and avoid repeated freeze thaw cycles. Store at 2 to 8 centigrade for one week. Store at -20 to -80 centigrade for twelve months from the date of receipt.
<b>Storage Buffer</b>	Supplied as solution form in PBS or lyophilized from PBS.

 Tel: 1-631-559-9269    1-516-512-3133

 Email: [info@creative-biomart.com](mailto:info@creative-biomart.com)     Fax: 1-631-938-8127

 45-1 Ramsey Road, Shirley, NY 11967, USA

**Reconstitution** Reconstitute in sterile water for a stock solution.

**Shipping** They are shipped out with dry ice/blue ice unless customers require otherwise.

## GENE INFORMATION

**Gene Name** KIR2DS4 killer cell immunoglobulin-like receptor, two domains, short cytoplasmic tail, 4 [ Homo sapiens (human) ]

**Official Symbol** KIR2DS4

**Synonyms** KIR2DS4; killer cell immunoglobulin-like receptor, two domains, short cytoplasmic tail, 4; killer cell immunoglobulin-like receptor 2DS4; CD158i; cl 39; KKA3; nkat8; NKAT-8; KIR antigen 2DS4; p58 NK receptor CL-39/CL-17; MHC class I NK cell receptor; killer inhibitory receptor 4-1-2; CD158 antigen-like family member I; natural killer-associated transcript 8; natural killer cell inhibitory receptor; P58 natural killer cell receptor clones CL-39/CL-17; KIR1D; NKAT8; CD158i; KIR412; MGC120019; MGC125315; MGC125317;

**Gene ID** 3809

**mRNA Refseq** NM\_012314

**Protein Refseq** NP\_036446

**MIM** 604955

**UniProt ID** P43632

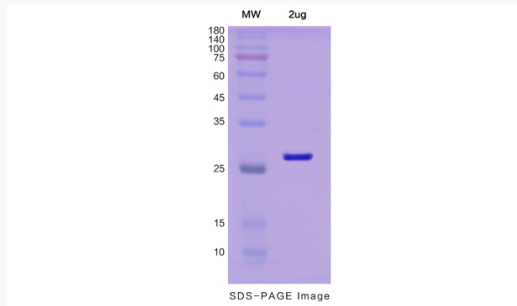
 Tel: 1-631-559-9269 1-516-512-3133

 Email: [info@creative-biomart.com](mailto:info@creative-biomart.com)  Fax: 1-631-938-8127

 45-1 Ramsey Road, Shirley, NY 11967, USA



**SDS-PAGE**



Tel: 1-631-559-9269 1-516-512-3133

Email: [info@creative-biomart.com](mailto:info@creative-biomart.com) Fax: 1-631-938-8127

45-1 Ramsey Road, Shirley, NY 11967, USA