

Recombinant Human KIR3DL1 Protein, C-His-tagged

Cat. No. KIR3DL1-084H Lot. No. (See product label)

SPECIFICATION

Product Overview	Recombinant Human KIR3DL1 Protein with C-His tag was expressed in E. coli.
Species	Human
Source	E.coli
Description	KIR3DL1, receptor on natural killer (NK) cells for HLA Bw4 allele. Inhibits the activity of NK cells thus preventing cell lysis.
Molecular Mass	~35 kDa
AA Sequence	<p>HMGGQDKPFLSAWPSAVVPRGGHVTLRCHYRHRFNNFMLYKEDRIHIPIFHGRIFQ ESNMSPVTTAHAGNYTCRGSHPHSPTGWSAPSNPVVIMVTGNHRKPSLLAHPGP LVKSGERVILQCWSDIMFEHFFLHKEGISKDPSRLVGQIHDGVSKANFSIGPMMLALA GTYRCYGSVTHTPYQLSAPSDPLDIVVTGPYEKPSLSAQPGPKVQAGESVTLSLSCSS RSSYDMYHLSREGGAHERRLPAVRKVNRTFQADFPLGPATHGGTYRCFGSFRHSP YEWSDPDPLLVSVTGNPSSSWPSPTEPSSKSGNPRHLH</p>
Purity	Transferred into competent cells and the supernatant was purified by NI column affinity chromatography and the purity is > 85% (by SDS-PAGE).
Notes	For research use only, not for use in diagnostic procedure.
Storage	Store at 4 centigrade short term. Aliquot and store at -20 centigrade long term. Avoid freeze-thaw cycles.

 Tel: 1-631-559-9269 1-516-512-3133

 Email: info@creative-biomart.com  Fax: 1-631-938-8127

 45-1 Ramsey Road, Shirley, NY 11967, USA

Concentration ≥0.5 mg/mL

Storage Buffer PBS, 4M Urea, pH7.4

GENE INFORMATION

Gene Name KIR3DL1 killer cell immunoglobulin-like receptor, three domains, long cytoplasmic tail, 1 [Homo sapiens (human)]

Official Symbol KIR3DL1

Synonyms KIR3DL1; killer cell immunoglobulin-like receptor, three domains, long cytoplasmic tail, 1; KIR; killer cell immunoglobulin-like receptor 3DL1; AMB11; CD158e1; CD158e1/2; CD158e2; cl 2; cl 11; nkat3; NKB1; NKB1B; NKAT-3; NK-receptor; KIR antigen 3DL1; killer Ig receptor; p70 NK receptor CL-2/CL-11; MHC class I NK cell receptor; CD158 antigen-like family member E; p70 killer cell inhibitory receptor; natural killer-associated transcript 3; HLA-BW4-specific inhibitory NK cell receptor; p70 natural killer cell receptor clones CL-2/CL-11; NKAT3; CD158E1; KIR3DL1/S1; MGC119726; MGC119728; MGC126589; MGC126591;

Gene ID 3811

mRNA Refseq NM_013289

Protein Refseq NP_037421

MIM 604946

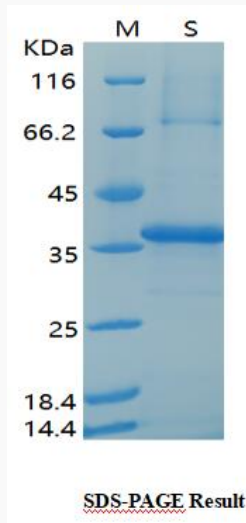
UniProt ID P43629

 Tel: 1-631-559-9269 1-516-512-3133

 Email: info@creative-biomart.com  Fax: 1-631-938-8127

 45-1 Ramsey Road, Shirley, NY 11967, USA

SDS-PAGE



 Tel: 1-631-559-9269 1-516-512-3133

 Email: info@creative-biomart.com  Fax: 1-631-938-8127

 45-1 Ramsey Road, Shirley, NY 11967, USA