

# Active Recombinant Human KIR3DL2 protein, His-Avi-tagged

Cat. No. KIR3DL2-3291H Lot. No. (See product label)

## SPECIFICATION

<b>Product Overview</b>	Recombinant Human KIR3DL2 protein(P43630-1)(Leu22-Leu339) is expressed from HEK293 with His tag and Avi tag at the C-Terminus.
<b>Species</b>	Human
<b>Source</b>	HEK293
<b>ProteinLength</b>	Leu22-Leu339
<b>Form</b>	Lyophilized from 0.22µm filtered solution in PBS (pH 7.4). Normally 8% trehalose is added as protectant before lyophilization.
<b>Bio-activity</b>	Immobilized Human KIR3DL2, His Tag at 5µg/ml (100µl/well) on the plate. Dose response curve for Anti-KIR3DL2 Antibody, hFc Tag with the EC50 of 0.11 µg/ml determined by ELISA.
<b>Molecular Mass</b>	The protein has a predicted MW of 37.9 kDa. Due to glycosylation, the protein migrates to 40-70 kDa based on Tris-Bis PAGE result.
<b>Endotoxin</b>	Less than 1EU per µg by the LAL method.
<b>Purity</b>	> 95% as determined by Tris-Bis PAGE > 95% as determined by HPLC
<b>Storage</b>	-20 to -80°C for 12 months as supplied from date of receipt.

 Tel: 1-631-559-9269 1-516-512-3133

 Email: [info@creative-biomart.com](mailto:info@creative-biomart.com)  Fax: 1-631-938-8127

 45-1 Ramsey Road, Shirley, NY 11967, USA

-20 to -80°C for 3-6 months in unopened state after reconstitution.

2-8°C for 2-7 days after reconstitution.

Recommend to aliquot the protein into smaller quantities for optimal storage. Please minimize freeze-thaw cycles.

**Reconstitution**

Centrifuge the tube before opening. Reconstituting to a concentration more than 100 µg/ml is recommended. Dissolve the lyophilized protein in distilled water.

## GENE INFORMATION

**Gene Name**

KIR3DL2 killer cell immunoglobulin-like receptor, three domains, long cytoplasmic tail, 2 [ Homo sapiens ]

**Official Symbol**

KIR3DL2

**Synonyms**

KIR3DL2; killer cell immunoglobulin-like receptor, three domains, long cytoplasmic tail, 2; killer cell immunoglobulin-like receptor 3DL2; CD158K; cl 5; nkat4; nkat4a; nkat4b; KIR antigen 3DL2; killer Ig receptor; p70 NK receptor CL-5; MHC class I NK cell receptor; CD158 antigen-like family member K; p70 killer cell inhibitory receptor; natural killer-associated transcript 4; natural killer cell inhibitory receptor; p70 natural killer cell receptor clone CL-5; killer cell immunoglobulin-like receptor KIR3DL2; p140; NKAT4; NKAT-4; NKAT4B; MGC125321;

**Gene ID**

3812

**mRNA Refseq**

NM\_001242867

**Protein Refseq**

NP\_001229796

**MIM**

604947

 Tel: 1-631-559-9269 1-516-512-3133

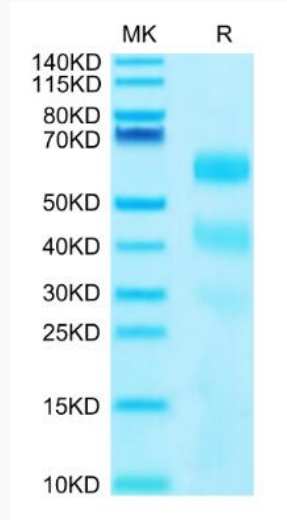
 Email: [info@creative-biomart.com](mailto:info@creative-biomart.com)  Fax: 1-631-938-8127

 45-1 Ramsey Road, Shirley, NY 11967, USA

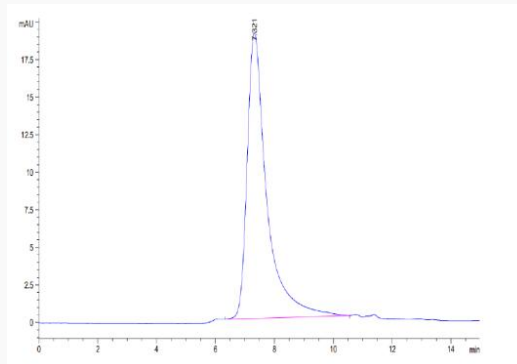
UniProt ID

P43630

SDS-PAGE



SEC-HPLC

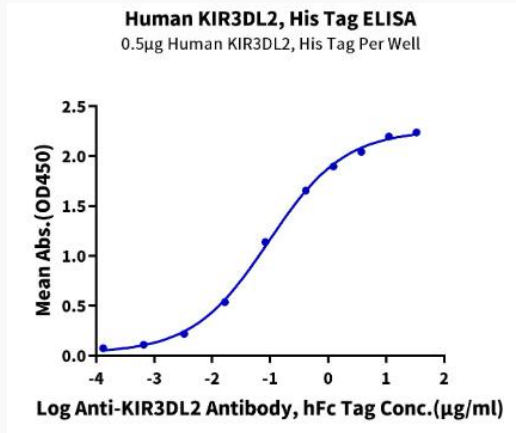


 Tel: 1-631-559-9269 1-516-512-3133

 Email: [info@creative-biomart.com](mailto:info@creative-biomart.com)  Fax: 1-631-938-8127

 45-1 Ramsey Road, Shirley, NY 11967, USA

**ELISA Data**



 Tel: 1-631-559-9269 1-516-512-3133

 Email: [info@creative-biomart.com](mailto:info@creative-biomart.com)  Fax: 1-631-938-8127

 45-1 Ramsey Road, Shirley, NY 11967, USA