

Recombinant Rhesus macaque KIR3DL2 protein, His-tagged

Cat. No. KIR3DL2-3292R **Lot. No.** (See product label)

SPECIFICATION

Product Overview	Recombinant Rhesus macaque KIR3DL2 protein(F7GCU5)(His22-His338), fused with His tag, was expressed in HEK293.
Species	Human
Source	HEK293
ProteinLength	His22-His338
Form	Lyophilized from 0.22µm filtered solution in PBS (pH 7.4). Normally 8% trehalose is added as protectant before lyophilization.
Molecular Mass	The protein has a predicted MW of 35.39 kDa. Due to glycosylation, the protein migrates to 50-60 kDa based on Tris-Bis PAGE result.
Endotoxin	Less than 1EU per µg by the LAL method.
Purity	> 95% as determined by Tris-Bis PAGE > 95% as determined by HPLC
Storage	-20 to -80°C for 12 months as supplied from date of receipt. -20 to -80°C for 3-6 months in unopened state after reconstitution. 2-8°C for 2-7 days after reconstitution. Recommend to aliquot the protein into smaller quantities for optimal storage. Please minimize freeze-thaw cycles.

 Tel: 1-631-559-9269 1-516-512-3133

 Email: info@creative-biomart.com  Fax: 1-631-938-8127

 45-1 Ramsey Road, Shirley, NY 11967, USA

Reconstitution Centrifuge the tube before opening. Reconstituting to a concentration more than 100 µg/ml is recommended. Dissolve the lyophilized protein in distilled water.

GENE INFORMATION

Gene Name KIR3DL2 killer cell immunoglobulin-like receptor, three domains, long cytoplasmic tail, 2 [Homo sapiens]

Official Symbol KIR3DL2

Synonyms KIR3DL2; killer cell immunoglobulin-like receptor, three domains, long cytoplasmic tail, 2; killer cell immunoglobulin-like receptor 3DL2; CD158K; cl 5; nkat4; nkat4a; nkat4b; KIR antigen 3DL2; killer Ig receptor; p70 NK receptor CL-5; MHC class I NK cell receptor; CD158 antigen-like family member K; p70 killer cell inhibitory receptor; natural killer-associated transcript 4; natural killer cell inhibitory receptor; p70 natural killer cell receptor clone CL-5; killer cell immunoglobulin-like receptor KIR3DL2; p140; NKAT4; NKAT-4; NKAT4B; MGC125321;

Gene ID 3812

mRNA Refseq NM_001242867

Protein Refseq NP_001229796

MIM 604947

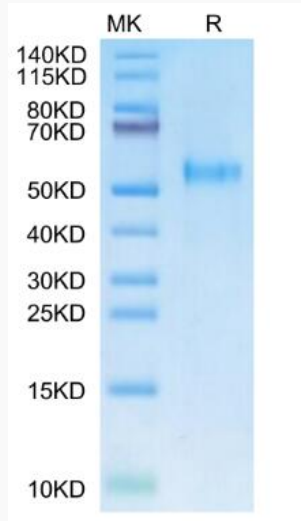
UniProt ID P43630

 Tel: 1-631-559-9269 1-516-512-3133

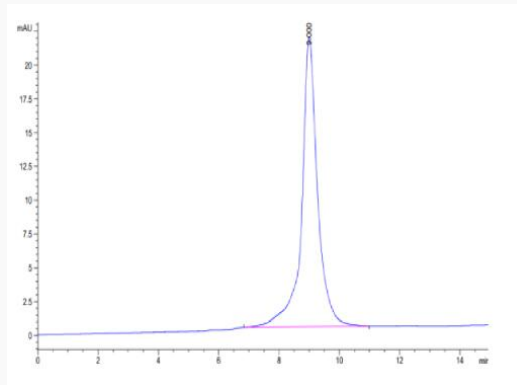
 Email: info@creative-biomart.com  Fax: 1-631-938-8127

 45-1 Ramsey Road, Shirley, NY 11967, USA

SDS-PAGE



SEC-HPLC



 Tel: 1-631-559-9269 1-516-512-3133

 Email: info@creative-biomart.com  Fax: 1-631-938-8127

 45-1 Ramsey Road, Shirley, NY 11967, USA