

Recombinant Human KIR3DL2 protein, rFc-tagged

Cat. No. KIR3DL2-3714H Lot. No. (See product label)

SPECIFICATION

Product Overview	Recombinant Human KIR3DL2 protein(P43630-1)(Leu22-His340), fused with C-terminal rFc tag, was expressed in HEK293.
Species	Human
Source	HEK293
Form	Lyophilized from 0.22 µm filtered solution in PBS, pH 7.4. Normally 5% trehalose and 5% mannitol are added as protectants before lyophilization.
Molecular Mass	61.3 kDa
Endotoxin	<0.1 EU/µg protein, LAL method
Purity	>90 %, SDS-PAGE
Storage	It is recommended that the protein be aliquoted for optimal storage. Avoid repeated freeze-thaw cycles. Until expiry date, -20°C to -80°C as lyophilized proteins. 3 months, -20°C to -80°C under sterile conditions after reconstitution.
Reconstitution	Briefly centrifuge the tube before opening. Reconstitute at 0.1-0.5 mg/mL in sterile water.

GENE INFORMATION

 Tel: 1-631-559-9269 1-516-512-3133

 Email: info@creative-biomart.com  Fax: 1-631-938-8127

 45-1 Ramsey Road, Shirley, NY 11967, USA

Gene Name	KIR3DL2 killer cell immunoglobulin-like receptor, three domains, long cytoplasmic tail, 2 [Homo sapiens]
Official Symbol	KIR3DL2
Synonyms	KIR3DL2; killer cell immunoglobulin-like receptor, three domains, long cytoplasmic tail, 2; killer cell immunoglobulin-like receptor 3DL2; CD158K; cl 5; nkat4; nkat4a; nkat4b; KIR antigen 3DL2; killer Ig receptor; p70 NK receptor CL-5; MHC class I NK cell receptor; CD158 antigen-like family member K; p70 killer cell inhibitory receptor; natural killer-associated transcript 4; natural killer cell inhibitory receptor; p70 natural killer cell receptor clone CL-5; killer cell immunoglobulin-like receptor KIR3DL2; p140; NKAT4; NKAT-4; NKAT4B; MGC125321;
Gene ID	3812
mRNA Refseq	NM_001242867
Protein Refseq	NP_001229796
MIM	604947
UniProt ID	P43630

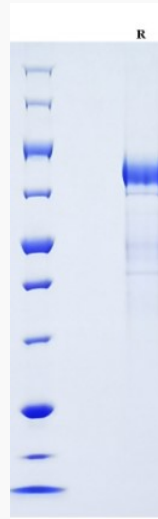
 Tel: 1-631-559-9269 1-516-512-3133

 Email: info@creative-biomart.com  Fax: 1-631-938-8127

 45-1 Ramsey Road, Shirley, NY 11967, USA



SDS-PAGE



Tel: 1-631-559-9269 1-516-512-3133

Email: info@creative-biomart.com Fax: 1-631-938-8127

45-1 Ramsey Road, Shirley, NY 11967, USA