

## Recombinant Human KIR3DL2 Protein (Met1-His340), C-His tagged

Cat. No. KIR3DL2-4344H Lot. No. (See product label)

### SPECIFICATION

<b>Product Overview</b>	Recombinant human KIR3DL2 (Met1-His340) fused with the C-terminal His tag was expressed in Mammalian cells.
<b>Species</b>	Human
<b>Source</b>	Mammalian Cells
<b>ProteinLength</b>	Met1-His340
<b>Form</b>	Lyophilized powder/frozen liquid
<b>Molecular Mass</b>	37.51 kDa
<b>Endotoxin</b>	< 1.0 EU/μg of the protein as determined by the LAL method.
<b>Purity</b>	>90% as determined by SDS-PAGE.
<b>Notes</b>	For research use only.
<b>Storage</b>	Use a manual defrost freezer and avoid repeated freeze thaw cycles. Store at 2 to 8 centigrade for one week. Store at -20 to -80 centigrade for twelve months from the date of receipt.
<b>Storage Buffer</b>	Supplied as solution form in PBS or lyophilized from PBS.

 Tel: 1-631-559-9269 1-516-512-3133

 Email: [info@creative-biomart.com](mailto:info@creative-biomart.com)  Fax: 1-631-938-8127

 45-1 Ramsey Road, Shirley, NY 11967, USA

**Reconstitution** Reconstitute in sterile water for a stock solution.

**Shipping** They are shipped out with dry ice/blue ice unless customers require otherwise.

## GENE INFORMATION

**Gene Name** KIR3DL2 killer cell immunoglobulin-like receptor, three domains, long cytoplasmic tail, 2 [ Homo sapiens (human) ]

**Official Symbol** KIR3DL2

**Synonyms** KIR3DL2; killer cell immunoglobulin-like receptor, three domains, long cytoplasmic tail, 2; killer cell immunoglobulin-like receptor 3DL2; CD158K; cl 5; nkat4; nkat4a; nkat4b; KIR antigen 3DL2; killer Ig receptor; p70 NK receptor CL-5; MHC class I NK cell receptor; CD158 antigen-like family member K; p70 killer cell inhibitory receptor; natural killer-associated transcript 4; natural killer cell inhibitory receptor; p70 natural killer cell receptor clone CL-5; killer cell immunoglobulin-like receptor KIR3DL2; p140; NKAT4; NKAT-4; NKAT4B; MGC125321;

**Gene ID** 3812

**mRNA Refseq** NM\_001242867

**Protein Refseq** NP\_001229796

**MIM** 604947

**UniProt ID** P43630

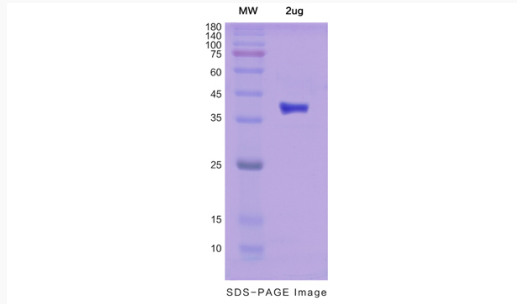
 Tel: 1-631-559-9269 1-516-512-3133

 Email: [info@creative-biomart.com](mailto:info@creative-biomart.com)  Fax: 1-631-938-8127

 45-1 Ramsey Road, Shirley, NY 11967, USA



**SDS-PAGE**



Tel: 1-631-559-9269 1-516-512-3133

Email: [info@creative-biomart.com](mailto:info@creative-biomart.com) Fax: 1-631-938-8127

45-1 Ramsey Road, Shirley, NY 11967, USA