

Recombinant Human KIR3DL3 Protein, C-His-tagged

Cat. No. KIR3DL3-234H Lot. No. (See product label)

SPECIFICATION

Product Overview	Recombinant Human KIR3DL3 Protein with C-His tag was expressed in E. coli.
Species	Human
Source	E.coli
Description	KIR3DL3, receptor on natural killer cells. May inhibit the activity of NK cells thus preventing cell lysis.
Molecular Mass	~33 kDa
AA Sequence	QDKPFLSAWPGTVVSEGQHVTLQCRSRLGFNEFSLSKEDGMPVPELYNRIFRNSFL MGPVTPAHAGTYRCCSSHPHSPTGWSAPSNPVMVTGVHRKPSLLAHPGPLVKS GETVILQCWSDVRFERFLLHREGITEDPLRLVGQLHDAGSQVNYSMGPMPALAGT YRCFGSVTHLPYELSAPSDPLDIVVGLYGKPSLSAQPGPTVQAGENVTLSCSSRSL FDIYHLSREAEAGELRLTAVLRVNGTFQANFPLGPVTHGGNYRCFGSFRALPHAWS DPSDPLPVSVTGNSRHL
Purity	Transferred into competent cells and the supernatant was purified by NI column affinity chromatography and the purity is > 85% (by SDS-PAGE).
Notes	For research use only, not for use in diagnostic procedure.
Storage	Store at 4 centigrade short term. Aliquot and store at -20 centigrade long term. Avoid freeze-thaw cycles.

 Tel: 1-631-559-9269 1-516-512-3133

 Email: info@creative-biomart.com  Fax: 1-631-938-8127

 45-1 Ramsey Road, Shirley, NY 11967, USA

Concentration ≥0.5 mg/mL

Storage Buffer PBS, 4M Urea, pH7.4

GENE INFORMATION

Gene Name KIR3DL3 killer cell immunoglobulin like receptor, three Ig domains and long cytoplasmic tail 3 [Homo sapiens (human)]

Official Symbol KIR3DL3

Synonyms KIR3DL3; killer cell immunoglobulin like receptor, three Ig domains and long cytoplasmic tail 3; KIR44; KIRC1; CD158Z; KIR3DL7; KIR2DL5B; killer cell immunoglobulin-like receptor 3DL3; CD158 antigen-like family member Z; KIR2DL5B*011; KIR2DS2*00101; KIR2DS2*00101-v; KIR2DS2*00102; KIR2DS2*00105; KIR2DS2*004; KIR3DL3 Killer-cell Immunoglobulin-like Receptor; KIR3DL3*00301; KIR3DL3*00402; KIR3DL3*00701; KIR3DL3*00802; KIR3DL3*00901; KIR3DL3*012; KIR3DL3*01402; KIR3DL3*01403; KIR3DL3*01403-v; KIR3DL3*01404; KIR3DL3*01406; KIR3DL3*01601; KIR3DL3*020; KIR3DL3*02801; KIR3DL3*034; KIR3DL3*050; KIR3DL3*071-v; killer cell Ig-like receptor KIR3DL7; killer cell immunoglobulin-like receptor, three domains, long cytoplasmic tail, 3; killer cell inhibitory receptor 1; killer-cell immunoglobulin-like receptor 3DL3

Gene ID 115653

mRNA Refseq NM_153443

Protein Refseq NP_703144

MIM 610095

 Tel: 1-631-559-9269 1-516-512-3133

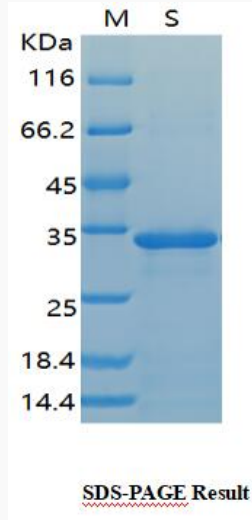
 Email: info@creative-biomart.com  Fax: 1-631-938-8127

 45-1 Ramsey Road, Shirley, NY 11967, USA

UniProt ID

Q8N743

SDS-PAGE



 Tel: 1-631-559-9269 1-516-512-3133

 Email: info@creative-biomart.com  Fax: 1-631-938-8127

 45-1 Ramsey Road, Shirley, NY 11967, USA