

Recombinant Human KIR3DL3 Protein (Met1-Leu322), C-His tagged

Cat. No. KIR3DL3-3801H **Lot. No.** (See product label)

SPECIFICATION

Product Overview

Recombinant human KIR3DL3 (Met1-Leu322) fused with the C-terminal His tag was expressed in Mammalian cells.

Species

Human

Source

Mammalian Cells

ProteinLength

Met1-Leu322

Description

Killer cell immunoglobulin-like receptors (KIRs) are transmembrane glycoproteins expressed by natural killer cells and subsets of T cells. The KIR genes are polymorphic and highly homologous and they are found in a cluster on chromosome 19q13.4 within the 1 Mb leukocyte receptor complex (LRC) . The gene content of the KIR gene cluster varies among haplotypes, although several "framework" genes are found in all haplotypes (KIR3DL3, KIR3DP1, KIR3DL4, KIR3DL2) . The KIR proteins are classified by the number of extracellular immunoglobulin domains (2D or 3D) and by whether they have a long (L) or short (S) cytoplasmic domain. KIR proteins with the long cytoplasmic domain transduce inhibitory signals upon ligand binding via an immune tyrosine-based inhibitory motif (ITIM), while KIR proteins with the short cytoplasmic domain lack the ITIM motif and instead associate with the TYRO protein tyrosine kinase binding protein to transduce activating signals. The ligands for several KIR proteins are subsets of HLA class I molecules; thus, KIR proteins are thought to play an important role in regulation of the immune response. This gene is one of the

 Tel: 1-631-559-9269 1-516-512-3133

 Email: info@creative-biomart.com  Fax: 1-631-938-8127

 45-1 Ramsey Road, Shirley, NY 11967, USA

	"framework" loci that is present on all haplotypes.
Form	Lyophilized powder/frozen liquid
Molecular Mass	35.53 kDa
Endotoxin	< 1.0 EU/μg of the protein as determined by the LAL method.
Purity	>90% as determined by SDS-PAGE.
Notes	For research use only.
Storage	Use a manual defrost freezer and avoid repeated freeze thaw cycles. Store at 2 to 8 centigrade for one week. Store at -20 to -80 centigrade for twelve months from the date of receipt.
Storage Buffer	Supplied as solution form in PBS or lyophilized from PBS.
Reconstitution	Reconstitute in sterile water for a stock solution.
Shipping	They are shipped out with dry ice/blue ice unless customers require otherwise.

GENE INFORMATION

Gene Name	KIR3DL3 killer cell immunoglobulin like receptor, three Ig domains and long cytoplasmic tail 3 [Homo sapiens (human)]
Official Symbol	KIR3DL3
Synonyms	KIR3DL3; killer cell immunoglobulin like receptor, three Ig domains and long cytoplasmic tail 3; KIR44; KIRC1; CD158Z; KIR3DL7; KIR2DL5B; killer cell

 Tel: 1-631-559-9269 1-516-512-3133

 Email: info@creative-biomart.com  Fax: 1-631-938-8127

 45-1 Ramsey Road, Shirley, NY 11967, USA

immunoglobulin-like receptor 3DL3; CD158 antigen-like family member Z; KIR2DL5B*011; KIR2DS2*00101; KIR2DS2*00101-v; KIR2DS2*00102; KIR2DS2*00105; KIR2DS2*004; KIR3DL3 Killer-cell Immunoglobulin-like Receptor; KIR3DL3*00301; KIR3DL3*00402; KIR3DL3*00701; KIR3DL3*00802; KIR3DL3*00901; KIR3DL3*012; KIR3DL3*01402; KIR3DL3*01403; KIR3DL3*01403-v; KIR3DL3*01404; KIR3DL3*01406; KIR3DL3*01601; KIR3DL3*020; KIR3DL3*02801; KIR3DL3*034; KIR3DL3*050; KIR3DL3*071-v; killer cell Ig-like receptor KIR3DL7; killer cell immunoglobulin-like receptor, three domains, long cytoplasmic tail, 3; killer cell inhibitory receptor 1; killer-cell immunoglobulin-like receptor 3DL3

Gene ID [115653](#)

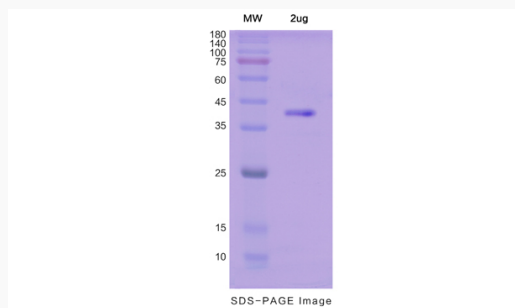
mRNA Refseq [NM_153443](#)

Protein Refseq [NP_703144](#)

MIM [610095](#)

UniProt ID [Q8N743](#)

SDS-PAGE



 Tel: 1-631-559-9269 1-516-512-3133

 Email: info@creative-biomart.com  Fax: 1-631-938-8127

 45-1 Ramsey Road, Shirley, NY 11967, USA