

Recombinant Human KIR3DL3 protein, His-Avi-tagged

Cat. No. KIR3DL3-743H Lot. No. (See product label)

SPECIFICATION

Product Overview	Recombinant Human KIR3DL3 protein(Q8N743)(Glu26-Leu322), fused with C-terminal His and Avi tag, was expressed in HEK293.
Species	Human
Source	HEK293
ProteinLength	Glu26-Leu322
Tag	C-His-Avi
Form	Lyophilized from 0.22µm filtered solution in 20mM Tris, 150mM NaCl, 0.2M L-Arginine (pH 8.2). Normally 8% trehalose is added as protectant before lyophilization.
Bio-activity	Human B7-H7, hFc Tag captured on CM5 Chip via Protein A can bind Human KIR3DL3, His Tag with an affinity constant of 334 nM as determined in SPR assay (Biacore T200).
Molecular Mass	The protein has a predicted MW of 35.3 kDa. Due to glycosylation, the protein migrates to 48-52 kDa based on Tris-Bis PAGE result.
Endotoxin	Less than 1EU per µg by the LAL method.
Purity	> 95% as determined by Tris-Bis PAGE;> 95% as determined by HPLC

 Tel: 1-631-559-9269 1-516-512-3133

 Email: info@creative-biomart.com  Fax: 1-631-938-8127

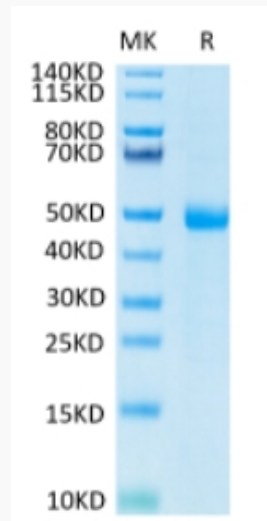
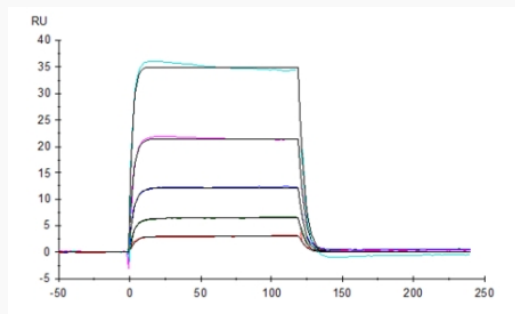
 45-1 Ramsey Road, Shirley, NY 11967, USA

Storage

Reconstituted protein stable at -80°C for 12 months, 4°C for 1 week. Use a manual defrost freezer and avoid repeated freeze-thaw cycles.

Reconstitution

Centrifuge tubes before opening. Reconstituting to a concentration more than 100 µg/ml is recommended. Dissolve the lyophilized protein in distilled water.

Tris-Bis PAGE**SPR Data**

 Tel: 1-631-559-9269 1-516-512-3133

 Email: info@creative-biomart.com  Fax: 1-631-938-8127

 45-1 Ramsey Road, Shirley, NY 11967, USA