

Recombinant Human KIR3DS1 Protein (Met1-His340), C-His tagged

Cat. No. KIR3DS1-4346H **Lot. No.** (See product label)

SPECIFICATION

Product Overview	Recombinant human KIR3DS1 (Met1-His340) fused with the C-terminal His tag was expressed in Mammalian cells.
Species	Human
Source	Mammalian Cells
ProteinLength	Met1-His340
Form	Lyophilized powder/frozen liquid
Molecular Mass	37.4 kDa
Endotoxin	< 1.0 EU/μg of the protein as determined by the LAL method.
Purity	>90% as determined by SDS-PAGE.
Notes	For research use only.
Storage	Use a manual defrost freezer and avoid repeated freeze thaw cycles. Store at 2 to 8 centigrade for one week. Store at -20 to -80 centigrade for twelve months from the date of receipt.
Storage Buffer	Supplied as solution form in PBS or lyophilized from PBS.

 Tel: 1-631-559-9269 1-516-512-3133

 Email: info@creative-biomart.com  Fax: 1-631-938-8127

 45-1 Ramsey Road, Shirley, NY 11967, USA

Reconstitution Reconstitute in sterile water for a stock solution.

Shipping They are shipped out with dry ice/blue ice unless customers require otherwise.

GENE INFORMATION

Gene Name KIR3DS1 killer cell immunoglobulin-like receptor, three domains, short cytoplasmic tail, 1 [Homo sapiens (human)]

Official Symbol KIR3DS1

Synonyms KIR3DS1; killer cell immunoglobulin-like receptor, three domains, short cytoplasmic tail, 1; killer cell immunoglobulin-like receptor 3DS1; nkat10; NKAT-10; killer Ig receptor; MHC class I NK cell receptor; natural killer-associated transcript 10; killer cell immunoglobulin-like receptor KIR3DS1; KIR-G1; NKAT10; CD158E2; KIR-123FM; MGC119726; MGC119728; MGC125316;

Gene ID 3813

mRNA Refseq NM_001083539

Protein Refseq NP_001077008

UniProt ID Q14943

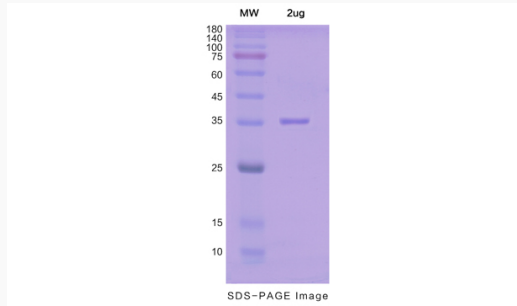
 Tel: 1-631-559-9269 1-516-512-3133

 Email: info@creative-biomart.com  Fax: 1-631-938-8127

 45-1 Ramsey Road, Shirley, NY 11967, USA



SDS-PAGE



Tel: 1-631-559-9269 1-516-512-3133

Email: info@creative-biomart.com Fax: 1-631-938-8127

45-1 Ramsey Road, Shirley, NY 11967, USA