

## Recombinant Human KIR3DX1 Protein, GST-tagged

**Cat. No.** KIR3DX1-4210H    **Lot. No.** (See product label)

### SPECIFICATION

<b>Product Overview</b>	Human FLJ00060 full-length ORF ( AAH33195.1, 1 a.a. - 78 a.a.) recombinant protein with GST-tag at N-terminal.
<b>Species</b>	Human
<b>Source</b>	Wheat Germ
<b>Description</b>	KIR3DX1 (Killer Cell Immunoglobulin Like Receptor, Three Ig Domains X1) is a Pseudogene. An important paralog of this gene is KIR3DL1.
<b>Molecular Mass</b>	35.1 kDa
<b>AA Sequence</b>	MANTEPTEGQRTDEEEPAAEETQEIIYAQLNHQALSQTGFPPASQCPHYLSYEDPSIYI TVHQAQAEARAAPSLWHKGH
<b>Applications</b>	Enzyme-linked Immunoabsorbent Assay Western Blot (Recombinant protein) Antibody Production Protein Array
<b>Notes</b>	Best use within three months from the date of receipt of this protein.
<b>Storage</b>	Store at -80 centigrade. Aliquot to avoid repeated freezing and thawing.
<b>Storage Buffer</b>	50 mM Tris-HCl, 10 mM reduced Glutathione, pH=8.0 in the elution buffer.

 Tel: 1-631-559-9269    1-516-512-3133

 Email: [info@creative-biomart.com](mailto:info@creative-biomart.com)     Fax: 1-631-938-8127

 45-1 Ramsey Road, Shirley, NY 11967, USA

## GENE INFORMATION

**Gene Name** KIR3DX1 killer cell immunoglobulin like receptor, three Ig domains X1 [ Homo sapiens (human) ]

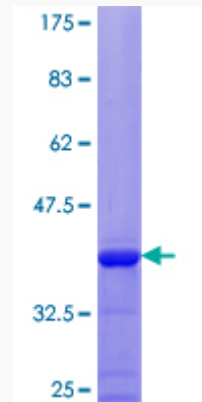
**Official Symbol** KIR3DX1

**Synonyms** KIR3DX1; killer cell immunoglobulin like receptor, three Ig domains X1; LENG12; KIR3DL0; immunoglobulin-like receptor KIR3DL0; killer cell immunoglobulin-like receptor, three domains, X1; leukocyte receptor cluster (LRC) member 12

**Gene ID** 90011

**UniProt ID** Q9H7L2

**Quality Control Testing**



12.5% SDS-PAGE Stained with Coomassie Blue.

 Tel: 1-631-559-9269 1-516-512-3133

 Email: [info@creative-biomart.com](mailto:info@creative-biomart.com)  Fax: 1-631-938-8127

 45-1 Ramsey Road, Shirley, NY 11967, USA