

Recombinant Human KISS1 Protein, Myc/DDK-tagged, C13 and N15-labeled

Cat. No. KISS1-5077H **Lot. No.** (See product label)

SPECIFICATION

Product Overview	KISS1 MS Standard C13 and N15-labeled recombinant protein (NP_002247) with a C-terminal MYC/DDK tag, was expressed in HEK293 cells.
Species	Human
Source	HEK293
Description	This gene is a metastasis suppressor gene that suppresses metastases of melanomas and breast carcinomas without affecting tumorigenicity. The encoded protein may inhibit chemotaxis and invasion and thereby attenuate metastasis in malignant melanomas. Studies suggest a putative role in the regulation of events downstream of cell-matrix adhesion, perhaps involving cytoskeletal reorganization. A protein product of this gene, kisspeptin, stimulates gonadotropin-releasing hormone (GnRH)-induced gonadotropin secretion and regulates the pubertal activation of GnRH neurons. A polymorphism in the terminal exon of this mRNA results in two protein isoforms. An adenosine present at the polymorphic site represents the third position in a stop codon. When the adenosine is absent, a downstream stop codon is utilized and the encoded protein extends for an additional seven amino acid residues.
Molecular Mass	14.7 kDa
AA Sequence	MNSLVSWQLLLFLCATHFGEPLEKVASVGNRPTGQQLLESLGLLAPGEQSLPCTER KPAATARLSRRGTSLSPPESSGSPQQPGLSAPHSRQIPAPQGAVLVQREKDLPNY

 Tel: 1-631-559-9269 1-516-512-3133

 Email: info@creative-biomart.com  Fax: 1-631-938-8127

 45-1 Ramsey Road, Shirley, NY 11967, USA

NWNSFGLRFGKREAAPGNHGRSAGRGRTRTRPLEQKLISEEDLAANDILDYKDDDDK
V

Purity > 80% as determined by SDS-PAGE and Coomassie blue staining

Stability Stable for 3 months from receipt of products under proper storage and handling conditions.

Storage Store at -80 centigrade. Avoid repeated freeze-thaw cycles.

Concentration 50 µg/mL as determined by BCA

Storage Buffer 100 mM glycine, 25 mM Tris-HCl, pH 7.3.

GENE INFORMATION

Gene Name [KISS1 KiSS-1 metastasis-suppressor \[Homo sapiens \(human\) \]](#)

Official Symbol [KISS1](#)

Synonyms KISS1; KiSS-1 metastasis-suppressor; metastasis-suppressor KiSS-1; metastin; kisspeptin-1; malignant melanoma metastasis-suppressor; KiSS-1; MGC39258;

Gene ID [3814](#)

mRNA Refseq [NM_002256](#)

Protein Refseq [NP_002247](#)

MIM [603286](#)

 Tel: 1-631-559-9269 1-516-512-3133

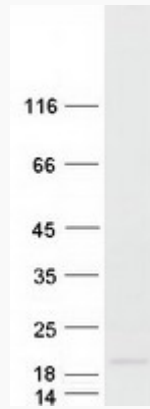
 Email: info@creative-biomart.com  Fax: 1-631-938-8127

 45-1 Ramsey Road, Shirley, NY 11967, USA

UniProt ID

Q15726

SDS-PAGE



 Tel: 1-631-559-9269 1-516-512-3133

 Email: info@creative-biomart.com  Fax: 1-631-938-8127

 45-1 Ramsey Road, Shirley, NY 11967, USA