

Recombinant Human KIT protein, His-tagged

Cat. No. KIT-3947H **Lot. No.** (See product label)

SPECIFICATION

Product Overview	Recombinant Human KIT protein(P10721-2)(Gln26-Thr516), fused with C-terminal His tag, was expressed in HEK293.
Species	Human
Source	HEK293
ProteinLength	Gln26-Thr516
Tag	C-His
Form	Lyophilized from 0.22µm filtered solution in PBS (pH 7.4). Normally 5% trehalose is added as protectant before lyophilization.
Bio-activity	Immobilized Human SCF at 5µg/ml (100µl/well) on the plate. Dose response curve for Human CD117, His Tag with the EC50 of 3.42µg/ml determined by ELISA.
Molecular Mass	The protein has a predicted MW of 56.3 kDa. Due to glycosylation, the protein migrates to 70-100 kDa based on Tris-Bis PAGE result.
Endotoxin	Less than 1EU per µg by the LAL method.
Purity	> 95% as determined by Tris-Bis PAGE; > 95% as determined by HPLC
Storage	Reconstituted protein stable at -80°C for 12 months, 4°C for 1 week. Use a manual

 Tel: 1-631-559-9269 1-516-512-3133

 Email: info@creative-biomart.com  Fax: 1-631-938-8127

 45-1 Ramsey Road, Shirley, NY 11967, USA

defrost freezer and avoid repeated freeze-thaw cycles.

Reconstitution

Centrifuge tubes before opening. Reconstituting to a concentration more than 100 µg/ml is recommended. Dissolve the lyophilized protein in distilled water.

GENE INFORMATION

Gene Name

[KIT v-kit Hardy-Zuckerman 4 feline sarcoma viral oncogene homolog \[Homo sapiens \]](#)

Official Symbol

[KIT](#)

Synonyms

KIT; v-kit Hardy-Zuckerman 4 feline sarcoma viral oncogene homolog; PBT, piebald trait; mast/stem cell growth factor receptor Kit; C Kit; CD117; SCFR; p145 c-kit; proto-oncogene c-Kit; piebald trait protein; soluble KIT variant 1; tyrosine-protein kinase Kit; proto-oncogene tyrosine-protein kinase Kit; v-kit Hardy-Zuckerman 4 feline sarcoma viral oncogene-like protein; PBT; C-Kit;

Gene ID

[3815](#)

mRNA Refseq

[NM_000222](#)

Protein Refseq

[NP_000213](#)

MIM

[164920](#)

UniProt ID

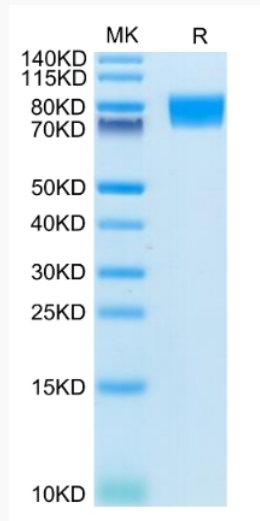
[P10721](#)

 Tel: 1-631-559-9269 1-516-512-3133

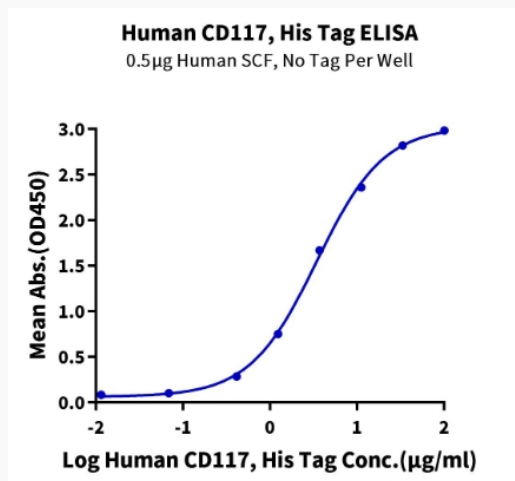
 Email: info@creative-biomart.com  Fax: 1-631-938-8127

 45-1 Ramsey Road, Shirley, NY 11967, USA

Tris-Bis PAGE



ELISA Data



 Tel: 1-631-559-9269 1-516-512-3133

 Email: info@creative-biomart.com  Fax: 1-631-938-8127

 45-1 Ramsey Road, Shirley, NY 11967, USA