

## Active Recombinant Human KITLG Protein

Cat. No. KITLG-141H Lot. No. (See product label)

### SPECIFICATION

<b>Product Overview</b>	Recombinant Human Stem Cell Factor is produced by our E.coli expression system and the target gene encoding Glu26-Ala189 is expressed.
<b>Species</b>	Human
<b>Source</b>	E.coli
<b>ProteinLength</b>	Glu26-Ala189
<b>Description</b>	Stem Cell Factor (SCF) is a hematopoietic growth factor that exerts its activity at the early stages of hematopoiesis. SCF stimulates the proliferation of myeloid, erythroid, and lymphoid progenitors in bone marrow cultures and has been shown to act synergistically with colony stimulating factors.
<b>Form</b>	Lyophilized from a 0.2 um filtered solution of 20mM PB, 150mM NaCl, pH 7.0.
<b>Bio-activity</b>	Measured by the dose-dependent stimulation of Human TF-1 cells. ED50 is less than 2 ng/ml. Specific Activity of $5.0 \times 10^5$ IU/mg.
<b>AA Sequence</b>	MEGICRNRVTNNVKDVTKLVANLPKDYMITLKYVPGMDVLP SHCWISEMVVQLSDSL TDLLDKFSNIS EGLSNYSIIDKLVNIVD DLVEC VKENSSKDLKKSFKSPEPRLFTPEEF FRIFNRSIDAFKDFVVASETSDCVVSSSTLSPEKDSRV SVTKPFMLPPVA
<b>Endotoxin</b>	Less than 0.1 ng/ug (1 EU/ug).

 Tel: 1-631-559-9269 1-516-512-3133

 Email: [info@creative-biomart.com](mailto:info@creative-biomart.com)  Fax: 1-631-938-8127

 45-1 Ramsey Road, Shirley, NY 11967, USA

<b>Purity</b>	>95%
<b>Storage</b>	<p>Lyophilized protein should be stored at &lt; -20 centigrade, though stable at room temperature for 3 weeks.</p> <p>Reconstituted protein solution can be stored at 4-7 centigrade for 2-7 days.</p> <p>Aliquots of reconstituted samples are stable at &lt; -20 centigrade for 3 months.</p>
<b>Quality Statement</b>	Purity: Greater than 95% as determined by reducing SDS-PAGE.
<b>Shipping</b>	<p>The product is shipped at ambient temperature.</p> <p>Upon receipt, store it immediately at the temperature listed below.</p>

## GENE INFORMATION

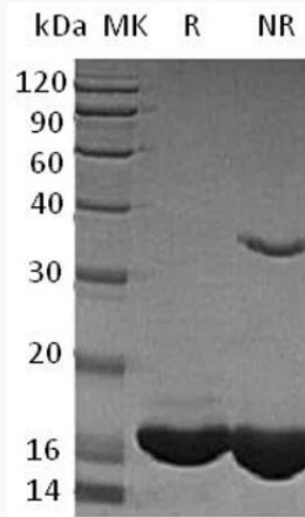
<b>Gene Name</b>	KITLG KIT ligand [ Homo sapiens (human) ]
<b>Official Symbol</b>	KITLG
<b>Synonyms</b>	Kit Ligand; Mast Cell Growth Factor; MGF; Stem Cell Factor; c-Kit ligand; SCF; SF; MGF; SLF; DCUA; FPH2; FPHH; KL-1; Kitl; WS2F; SHEP7; DFNA69
<b>Gene ID</b>	4254
<b>mRNA Refseq</b>	NM_000899.5
<b>Protein Refseq</b>	NP_000890.1
<b>MIM</b>	184745
<b>UniProt ID</b>	P21583

 Tel: 1-631-559-9269 1-516-512-3133

 Email: [info@creative-biomart.com](mailto:info@creative-biomart.com)  Fax: 1-631-938-8127

 45-1 Ramsey Road, Shirley, NY 11967, USA

**SDS-PAGE**



 Tel: 1-631-559-9269 1-516-512-3133

 Email: [info@creative-biomart.com](mailto:info@creative-biomart.com)  Fax: 1-631-938-8127

 45-1 Ramsey Road, Shirley, NY 11967, USA