

Active Recombinant Human KITLG Protein (Glu26-Ala189), GMP Grade, Animal-Free

Cat. No. KITLG-15HG Lot. No. (See product label)

SPECIFICATION

Product Overview GMP recombinant human SCF protein (Glu26-Ala189) with an N-terminal Met was expressed in E. coli, produced using non-animal reagents in an Animal-Free laboratory and manufactured and tested under cGMP guidelines.

Species Human

Source E.coli

ProteinLength Glu26-Ala189

Description This gene encodes the ligand of the tyrosine-kinase receptor encoded by the KIT locus. This ligand is a pleiotropic factor that acts in utero in germ cell and neural cell development, and hematopoiesis, all believed to reflect a role in cell migration. In adults, it functions pleiotropically, while mostly noted for its continued requirement in hematopoiesis. Two transcript variants encoding different isoforms have been found for this gene.

Bio-activity Measured in a cell proliferation assay using TF-1 human erythroleukemic cells. The ED50 for this effect is 1-5 ng/mL.
The specific activity of recombinant human SCF is $>1.0 \times 10^6$ units/mg, which is calibrated against the human SCF reference standard.

Molecular Mass Predicted Molecular Mass: 19 kDa
SDS-PAGE: 17-18 kDa, reducing conditions

 Tel: 1-631-559-9269 1-516-512-3133

 Email: info@creative-biomart.com  Fax: 1-631-938-8127

 45-1 Ramsey Road, Shirley, NY 11967, USA

N-terminal Sequence Analysis	Met-Glu26-Gly-Ile-(Cys)-Arg-Asn-Arg-Val-Thr
Endotoxin	<0.10 EU/ µg of the protein by the LAL method.
Purity	>97%, by SDS-PAGE visualized with Silver Staining and quantitative densitometry by Coomassie® Blue Staining.
Storage	<p>Use a manual defrost freezer and avoid repeated freeze-thaw cycles.</p> <p>A minimum of 12 months when stored at ≤ -20 centigrade as supplied. Refer to lot specific COA for the Use by Date.</p> <p>1 month, 2 to 8 centigrade under sterile conditions after reconstitution.</p> <p>3 months, ≤ -20 centigrade under sterile conditions after reconstitution.</p>
Storage Buffer	Lyophilized from a 0.2 µm filtered solution in PBS.
Reconstitution	Reconstitute at 100 µg/mL in PBS.
Shipping	The product is shipped with polar packs.

GENE INFORMATION

Gene Name	KITLG KIT ligand [Homo sapiens]
Official Symbol	KITLG
Synonyms	KITLG; KIT ligand; MGF; kit ligand; familial progressive hyperpigmentation 2; FPH2; Kitl; KL 1; mast cell growth factor; SCF; SF; steel factor; stem cell factor; c-Kit ligand; KL-1; SHEP7; kit-ligand; DKFZp686F2250;
Gene ID	4254

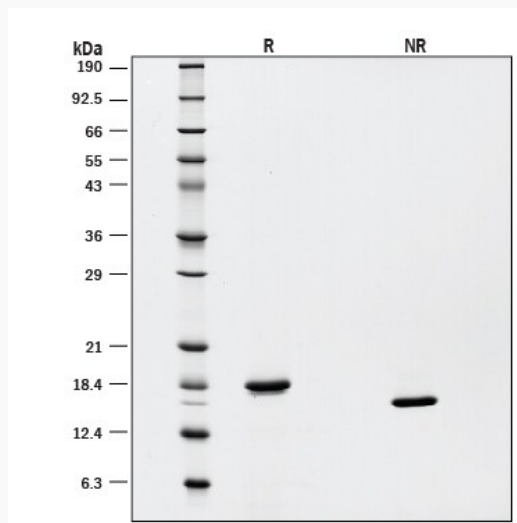
mRNA Refseq [NM_000899](#)

Protein Refseq [NP_000890](#)

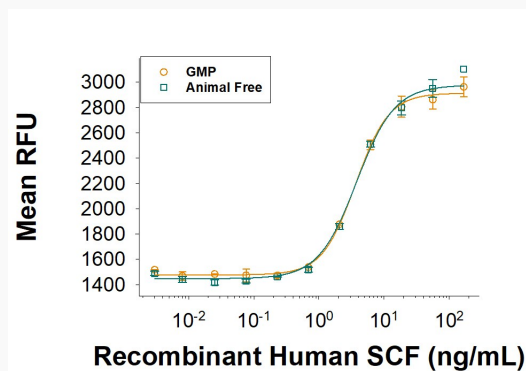
MIM [184745](#)

UniProt ID [P21583](#)

SDS-PAGE



Bioactivity



Tel: 1-631-559-9269 1-516-512-3133

Email: info@creative-biomart.com Fax: 1-631-938-8127

45-1 Ramsey Road, Shirley, NY 11967, USA