

Active Recombinant Human KITLG Protein, Pre-aliquoted

Cat. No. KITLG-19H Lot. No. (See product label)

SPECIFICATION

Product Overview	Recombinant Human KITLG Protein, Glu26-Ala189, with an N-terminal Met, was expressed in E. coli.
Species	Human
Source	E.coli
ProteinLength	Glu26-Ala189, with an N-terminal Met
Description	This gene encodes the ligand of the tyrosine-kinase receptor encoded by the KIT locus. This ligand is a pleiotropic factor that acts in utero in germ cell and neural cell development, and hematopoiesis, all believed to reflect a role in cell migration. In adults, it functions pleiotropically, while mostly noted for its continued requirement in hematopoiesis. Two transcript variants encoding different isoforms have been found for this gene.
Bio-activity	Measured in a cell proliferation assay using TF-1 human erythroleukemic cells. The ED50 for this effect is 1-5 ng/mL.
Molecular Mass	Predicted Molecular Mass:18.6 kDa SDS-PAGE: 19 kDa, reducing conditions.
N-terminal Sequence Analysis	Met

 Tel: 1-631-559-9269 1-516-512-3133

 Email: info@creative-biomart.com  Fax: 1-631-938-8127

 45-1 Ramsey Road, Shirley, NY 11967, USA

Endotoxin	< 0.10 EU/μg of the protein by the LAL method.
Purity	> 97% by SDS-PAGE under reducing conditions and visualized by silver stain.
Stability	<p>Use a manual defrost freezer and avoid repeated freeze-thaw cycles.</p> <ul style="list-style-type: none"> • 6 months from date of receipt at room temperature as supplied. • 12 months from date of receipt at 2-8 centigrade as supplied. • 1 month at 2-8 centigrade under sterile conditions after reconstitution. • 3 months at -20 to -80 centigrade under sterile conditions after reconstitution.
Reconstitution	For a stock solution, reconstitute at 50 μg/mL in sterile PBS, or simply roll Pre-aliquoted directly into cell culture medium for immediate use.
Shipping	The product is shipped at ambient temperature.

GENE INFORMATION

Gene Name	KITLG KIT ligand [Homo sapiens (human)]
Official Symbol	KITLG
Synonyms	KITLG; KIT ligand; SF; MGF; SCF; SLF; DCUA; FPH2; FPHH; KL-1; Kitl; SHEP7; DFNA69; kit ligand; c-Kit ligand; familial progressive hyperpigmentation 2; mast cell growth factor; steel factor; stem cell factor; EC 3.2.1.31
Gene ID	4254
mRNA Refseq	NM_000899
Protein Refseq	NP_000890

 Tel: 1-631-559-9269 1-516-512-3133

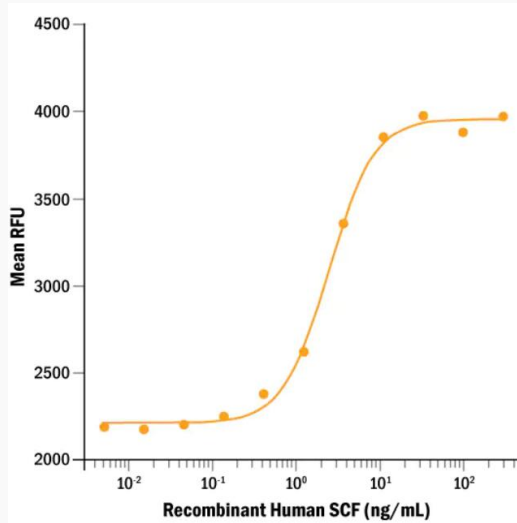
 Email: info@creative-biomart.com  Fax: 1-631-938-8127

 45-1 Ramsey Road, Shirley, NY 11967, USA

MIM 184745

UniProt ID P21583

Bio-activity



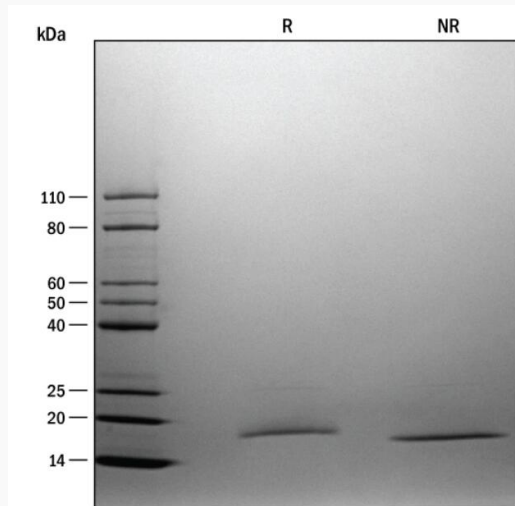
Recombinant Human SCF stimulates cell proliferation of the TF-1 human erythroleukemic cell line. The ED50 for this effect is 1-5 ng/mL.

 Tel: 1-631-559-9269 1-516-512-3133

 Email: info@creative-biomart.com  Fax: 1-631-938-8127

 45-1 Ramsey Road, Shirley, NY 11967, USA

SDS-PAGE



1 μ g/lane of Recombinant Human SCF was resolved with SDS-PAGE under reducing (R) and non-reducing (NR) conditions and visualized with silver staining, showing a single band at 19 kDa.

 Tel: 1-631-559-9269 1-516-512-3133

 Email: info@creative-biomart.com  Fax: 1-631-938-8127

 45-1 Ramsey Road, Shirley, NY 11967, USA