

## Active Recombinant Human KITLG Protein (Glu26-Ala189), C-His tagged, Animal-free, Carrier-free

Cat. No. KITLG-217H Lot. No. (See product label)

### SPECIFICATION

<b>Product Overview</b>	Recombinant Human KITLG Protein (Glu26-Ala189) with C-His tag was expressed in E. coli and Animal-free as well as Carrier-free.
<b>Species</b>	Human
<b>Source</b>	E.coli
<b>ProteinLength</b>	Glu26-Ala189
<b>Description</b>	Stem Cell Factor (SCF) is a 166-amino-acid protein with a monomeric molecular weight of approximately 18.5 kDa. SCF is the ligand for the tyrosine kinase receptor c-kit, which regulates other Growth Factors, such as granulocyte colony-stimulating factor (G-CSF), granulocyte macrophage-colony-stimulating factor (GM-CSF), and interleukin-3 to stimulate proliferation, and differentiation of hematopoietic stem cells. SCF can be produced by a variety of cells, including fibroblasts, smooth muscle, endothelial cells, mast cells and bone marrow macrophages endothelial cells.
<b>Form</b>	Lyophilized
<b>Bio-activity</b>	Measure by its ability to induce TF-1 cells proliferation. The ED50 for this effect is < 5 ng/mL. The specific activity of recombinant human SCF is > 5 × 10 <sup>5</sup> IU/mg.
<b>Molecular Mass</b>	The protein has a calculated MW of 19.4 kDa. The protein migrates as 21 kDa under reducing condition (SDS-PAGE analysis).

 Tel: 1-631-559-9269 1-516-512-3133

 Email: [info@creative-biomart.com](mailto:info@creative-biomart.com)  Fax: 1-631-938-8127

 45-1 Ramsey Road, Shirley, NY 11967, USA

<b>Endotoxin</b>	< 0.1 EU/μg of the protein by the LAL method.
<b>Purity</b>	>98% as determined by SDS-PAGE analysis.
<b>Storage</b>	This product is stable after storage at: -20 centigrade for 12 months in lyophilized state from date of receipt. -20 or -80 centigrade for 1 month under sterile conditions after reconstitution. Avoid repeated freeze/thaw cycles.
<b>Storage Buffer</b>	Lyophilized from a 0.2 μm filtered solution of PBS, pH 7.4.
<b>Reconstitution</b>	It is recommended to reconstitute the lyophilized protein in sterile H <sub>2</sub> O to a concentration not less than 200 μg/mL and incubate the stock solution for at least 20 min to ensure sufficient re-dissolved.
<b>Shipping</b>	The product is shipped with polar packs. Upon receipt, store it immediately at -20 centigrade or lower for long term storage.

## GENE INFORMATION

<b>Gene Name</b>	KITLG KIT ligand [ Homo sapiens (human) ]
<b>Official Symbol</b>	KITLG
<b>Synonyms</b>	KITLG; KIT ligand; MGF; kit ligand; familial progressive hyperpigmentation 2; FPH2; Kitl; KL 1; mast cell growth factor; SCF; SF; steel factor; stem cell factor; c-Kit ligand; KL-1; SHEP7; kit-ligand; DKFZp686F2250;
<b>Gene ID</b>	4254
<b>mRNA Refseq</b>	NM_000899

 Tel: 1-631-559-9269 1-516-512-3133

 Email: [info@creative-biomart.com](mailto:info@creative-biomart.com)  Fax: 1-631-938-8127

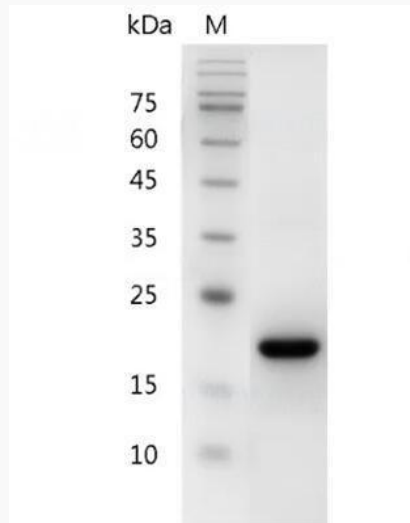
 45-1 Ramsey Road, Shirley, NY 11967, USA

**Protein Refseq** NP\_000890

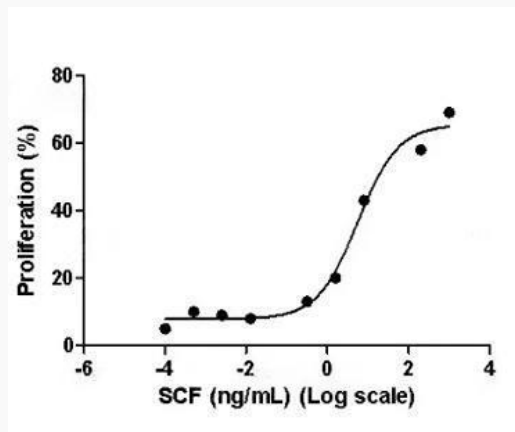
**MIM** 184745

**UniProt ID** P21583

**SDS-PAGE analysis  
of recombinant  
human SCF.**



**Activity**



Tel: 1-631-559-9269 1-516-512-3133

Email: [info@creative-biomart.com](mailto:info@creative-biomart.com) Fax: 1-631-938-8127

45-1 Ramsey Road, Shirley, NY 11967, USA



Human SCF, His Tag, E. coli (LDG173PHE) induced TF-1 cell proliferation.

 Tel: 1-631-559-9269 1-516-512-3133

 Email: [info@creative-biomart.com](mailto:info@creative-biomart.com)  Fax: 1-631-938-8127

 45-1 Ramsey Road, Shirley, NY 11967, USA