

Active Recombinant Human KITLG Protein, Tag Free, Biotin Labeled

Cat. No. KITLG-235H Lot. No. (See product label)

SPECIFICATION

Product Overview Biotin Labeled active Recombinant Human KITLG Protein without tag was expressed in HEK293.

Species Human

Source HEK293

ProteinLength 26-189 aa

Conjugation/Label Biotin

Description This gene encodes the ligand of the tyrosine-kinase receptor encoded by the KIT locus. This ligand is a pleiotropic factor that acts in utero in germ cell and neural cell development, and hematopoiesis, all believed to reflect a role in cell migration. In adults, it functions pleiotropically, while mostly noted for its continued requirement in hematopoiesis. Two transcript variants encoding different isoforms have been found for this gene.

Form Biotinylated via amines, Lyophilized from a 0.2 µm filtered solution in PBS with Trehalose.

Bio-activity Measured by its binding ability in a functional ELISA. When Recombinant Human CD117/c-kit Fc Chimera is immobilized at 1.00 µg/mL (100 µL/well), Biotinylated Recombinant Human SCF/c-kit Ligand binds with an ED50 of 1.00-6.00 ng/mL.

 Tel: 1-631-559-9269 1-516-512-3133

 Email: info@creative-biomart.com  Fax: 1-631-938-8127

 45-1 Ramsey Road, Shirley, NY 11967, USA

Molecular Mass	19 kDa
Endotoxin	< 0.10 EU/μg of the protein by the LAL method.
Purity	>95%, by SDS-PAGE visualized with Silver Staining and quantitative densitometry by Coomassie Blue Staining.
Storage	Use a manual defrost freezer and avoid repeated freeze-thaw cycles. 12 months from date of receipt, -20 to -70 centigrade as supplied. 1 month, 2 to 8 centigrade under sterile conditions after reconstitution. 3 months, -20 to -70 centigrade under sterile conditions after reconstitution.
Shipping	The product is shipped at ambient temperature.
Reconstitution	Reconstitute at 500 μg/mL in PBS.
N-terminal Sequence Analysis	Glu26

GENE INFORMATION

Gene Name	KITLG KIT ligand [Homo sapiens (human)]
Official Symbol	KITLG
Synonyms	KITLG; KIT ligand; SF; MGF; SCF; SLF; DCUA; FPH2; FPHH; KL-1; Kitl; WS2F; SHEP7; DFNA69; kit ligand; c-Kit ligand; familial progressive hyperpigmentation 2; mast cell growth factor; steel factor; stem cell factor; EC 3.2.1.31
Gene ID	4254

 Tel: 1-631-559-9269 1-516-512-3133

 Email: info@creative-biomart.com  Fax: 1-631-938-8127

 45-1 Ramsey Road, Shirley, NY 11967, USA

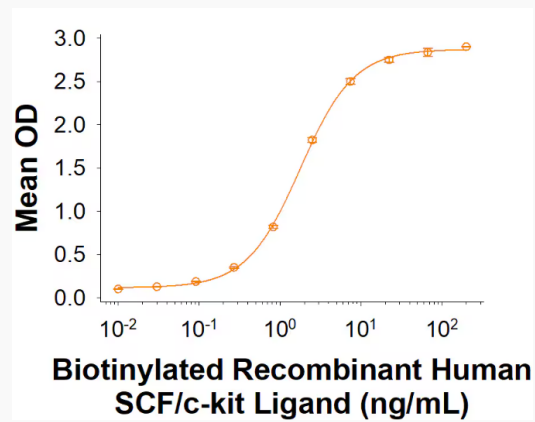
mRNA Refseq [NM_000899](#)

Protein Refseq [NP_000890](#)

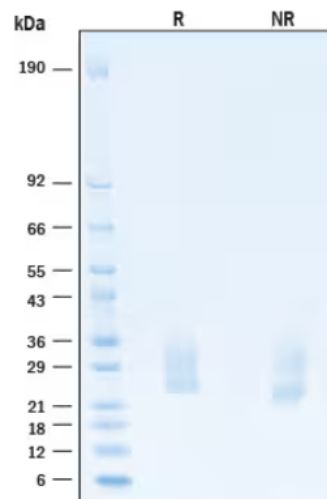
MIM [184745](#)

UniProt ID [P21583](#)

Activity



SDS-PAGE



Tel: 1-631-559-9269 1-516-512-3133

Email: info@creative-biomart.com Fax: 1-631-938-8127

45-1 Ramsey Road, Shirley, NY 11967, USA