

Recombinant Human KITLG Protein (Glu26-His214), C-His tagged

Cat. No. KITLG-2584H Lot. No. (See product label)

SPECIFICATION

Product Overview	Recombinant human KITLG (Glu26-His214) protein fused with the C-terminal His tag was expressed in Mammalian cells.
Species	Human
Source	Mammalian Cells
ProteinLength	Glu26-His214
Molecular Mass	20.79 kDa
Purity	>90 % as determined by SDS-PAGE.
Notes	For research use only.
Storage	Use a manual defrost freezer and avoid repeated freeze thaw cycles. Store at 2 to 8 centigrade for one week. Store at -20 to -80 centigrade for twelve months from the date of receipt.
Storage Buffer	Supplied as solution form in PBS or lyophilized from PBS.
Reconstitution	Reconstitute in sterile water for a stock solution.
Shipping	In general, proteins are provided as lyophilized powder/frozen liquid. They are

 Tel: 1-631-559-9269 1-516-512-3133

 Email: info@creative-biomart.com  Fax: 1-631-938-8127

 45-1 Ramsey Road, Shirley, NY 11967, USA

shipped out with dry ice/blue ice unless customers require otherwise.

GENE INFORMATION

Gene Name	KITLG KIT ligand [Homo sapiens (human)]
Official Symbol	KITLG
Synonyms	KITLG; KIT ligand; MGF; kit ligand; familial progressive hyperpigmentation 2; FPH2; Kitl; KL 1; mast cell growth factor; SCF; SF; steel factor; stem cell factor; c-Kit ligand; KL-1; SHEP7; kit-ligand; DKFZp686F2250;
Gene ID	4254
mRNA Refseq	NM_000899
Protein Refseq	NP_000890
MIM	184745
UniProt ID	P21583

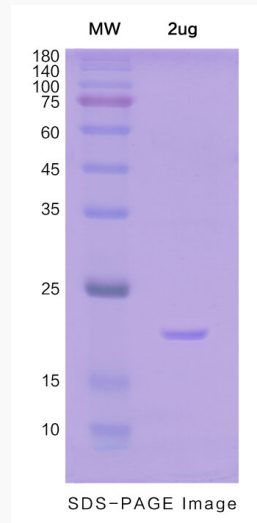
 Tel: 1-631-559-9269 1-516-512-3133

 Email: info@creative-biomart.com  Fax: 1-631-938-8127

 45-1 Ramsey Road, Shirley, NY 11967, USA



SDS-PAGE



Tel: 1-631-559-9269 1-516-512-3133

Email: info@creative-biomart.com Fax: 1-631-938-8127

45-1 Ramsey Road, Shirley, NY 11967, USA