

## Active Recombinant Human KITLG protein, His-tagged

Cat. No. KITLG-2655H Lot. No. (See product label)

### SPECIFICATION

|                         |  |
|-------------------------|--|
| <b>Product Overview</b> | Active Recombinant Human c-Kit ligand/SCF/KITLG Protein is produced by HEK293 cells expression system. The target protein is expressed with sequence (Glu26-His214) of human SCF/C-kit ligand (Accession #NP_000890.1) fused with a 6xHis tag at the C-terminus.   |
| <b>Species</b>          | Human  |
| <b>Source</b>           | HEK293   |
| <b>ProteinLength</b>    | Glu26-His214   |
| <b>Form</b>             | Lyophilized from a 0.22 µm filtered solution of PBS, pH 7.4.   |
| <b>Bio-activity</b>     | 1. Measured in a cell proliferation assay using TF-1 Human erythroleukemic cells. The ED50 for this effect is 0.08-0.3 ng/mL.<br>2. Measured by its binding ability in a functional ELISA. Immobilized recombinant human SCF at 1 µg/mL (100 µL/well) can bind recombinant human CD117 with a linear range of 1-6 ng/mL. |
| <b>Molecular Mass</b>   | 30-40 kDa  |
| <b>Endotoxin</b>        | < 0.1 EU/µg of the protein by LAL method.  |
| <b>Purity</b>           | > 97% by SDS-PAGE.   |

 Tel: 1-631-559-9269 1-516-512-3133

 Email: [info@creative-biomart.com](mailto:info@creative-biomart.com)  Fax: 1-631-938-8127

 45-1 Ramsey Road, Shirley, NY 11967, USA

**Storage** Store the lyophilized protein at -20°C to -80 °C for long term.  
After reconstitution, the protein solution is stable at -20 °C for 3 months, at 2-8 °C for up to 1 week.

**Reconstitution** Reconstitute to a concentration of 0.1-0.5 mg/mL in sterile distilled water.

## GENE INFORMATION

**Gene Name** [KITLG KIT ligand \[ Homo sapiens \]](#)

**Official Symbol** [KITLG](#)

**Synonyms** KITLG; KIT ligand; MGF; kit ligand; familial progressive hyperpigmentation 2; FPH2; Kitl; KL 1; mast cell growth factor; SCF; SF; steel factor; stem cell factor; c-Kit ligand; KL-1; SHEP7; kit-ligand; DKFZp686F2250;

**Gene ID** [4254](#)

**mRNA Refseq** [NM\\_000899](#)

**Protein Refseq** [NP\\_000890](#)

**MIM** [184745](#)

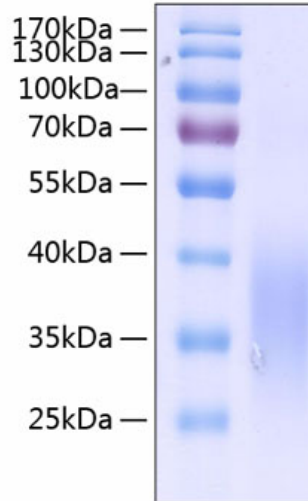
**UniProt ID** [P21583](#)

 Tel: 1-631-559-9269 1-516-512-3133

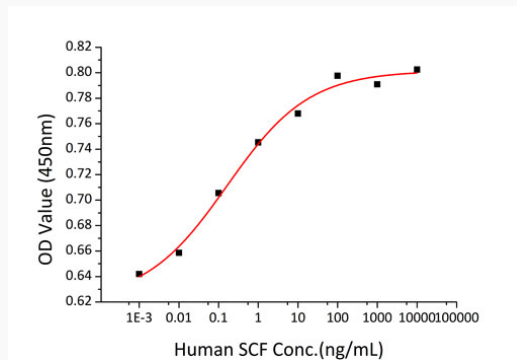
 Email: [info@creative-biomart.com](mailto:info@creative-biomart.com)  Fax: 1-631-938-8127

 45-1 Ramsey Road, Shirley, NY 11967, USA

**SDS-PAGE**



**Bio-activity**



 Tel: 1-631-559-9269 1-516-512-3133

 Email: [info@creative-biomart.com](mailto:info@creative-biomart.com)  Fax: 1-631-938-8127

 45-1 Ramsey Road, Shirley, NY 11967, USA