

Active Recombinant Human KITLG Protein, His & Avi-tagged, Biotinylated

Cat. No. KITLG-325H **Lot. No.** (See product label)

SPECIFICATION

Product Overview	Recombinant Human KITLG Protein, His & Avi-tagged, Biotinylated is expressed from human 293 cells (HEK293). It contains AA Glu 26 - Ala 190 (Accession # AAH69797). Predicted N-terminus: Glu 26. This protein carries an Avi tag at the C-terminus, followed by a polyhistidine tag. The protein has a calculated MW of 21.7 kDa. The protein migrates as 26-38 kDa under reducing (R) condition (SDS-PAGE) due to different glycosylation. The biotin to protein ratio is 0.5-1 as determined by the HABA assay.
Species	Human
Source	HEK293
ProteinLength	Glu 26 - Ala 190
Form	Lyophilized from 0.22 µm filtered solution in PBS, pH7.4. Normally trehalose is added as protectant before lyophilization.
Bio-activity	Immobilized Human CD117, Fc Tag at 2 µg/mL (100 µL/well) can bind Recombinant Human KITLG Protein, His & Avi-tagged, Biotinylated with a linear range of 0.1-3.1 ng/mL (QC tested).
Molecular Mass	21.7 kDa
Endotoxin	Less than 1.0 EU per

 Tel: 1-631-559-9269 1-516-512-3133

 Email: info@creative-biomart.com  Fax: 1-631-938-8127

 45-1 Ramsey Road, Shirley, NY 11967, USA

	µg by the LAL method.
Purity	>95% as determined by SDS-PAGE.
Notes	Please avoid repeated freeze-thaw cycles.
Stability	No activity loss is observed after storage at: 4-8 centigrade for 12 months in lyophilized state; -70 centigrade for 3 months under sterile conditions after reconstitution.
Storage	For long term storage, the product should be stored at lyophilized state at -20 centigrade or lower.
Reconstitution	It is recommended that sterile water be added to the vial to prepare a stock solution of 0.2 mg/ml. Centrifuge the vial at 4 centigrade before opening to recover the entire contents.
Conjugation	Biotin

GENE INFORMATION

Gene Name	KITLG KIT ligand [Homo sapiens]
Official Symbol	KITLG
Synonyms	KITLG; KIT ligand; MGF; kit ligand; FPH2; Kitl; KL 1; SCF; SF; steel factor; KL-1; SHEP7; kit-ligand; DKFZp686F2250;
Gene ID	4254
mRNA Refseq	NM_000899

 Tel: 1-631-559-9269 1-516-512-3133

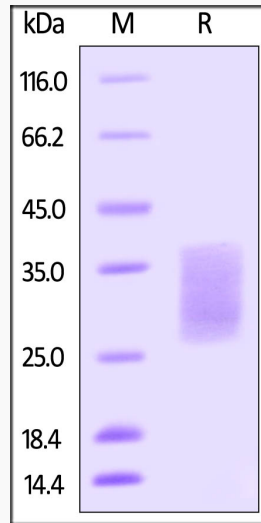
 Email: info@creative-biomart.com  Fax: 1-631-938-8127

 45-1 Ramsey Road, Shirley, NY 11967, USA

Protein Refseq NP_000890

MIM 184745

UniProt ID P21583



 Tel: 1-631-559-9269 1-516-512-3133

 Email: info@creative-biomart.com  Fax: 1-631-938-8127

 45-1 Ramsey Road, Shirley, NY 11967, USA