

Active Recombinant Human KITLG protein, His-tagged

Cat. No. KITLG-349H Lot. No. (See product label)

SPECIFICATION

Product Overview	Recombinant Human KITLG protein(NP_000890.1)(Glu26-His214), fused with His tag, was expressed in HEK293.
Species	Human
Source	HEK293
ProteinLength	Glu26-His214
Form	Lyophilized from 0.22 µm filtered solution in PBS, pH7.4.
Bio-activity	When Recombinant Human SCF(KITLG)/His Protein is immobilized at 2g/mL (100 µ/well), the concentration of Recombinant Human KIT/ hFC Protein that produces 50% of the optimal binding response is approximately 40 ng/ml.
Molecular Mass	The protein has a calculated MW of 23kDa.The reducing (R) heterodimer protein migrates as 35-55 kDa due to glycosylation
Endotoxin	<1EU/mg
Purity	SDS-PAGE>90%SEC>90%
Storage	Store at -20°C.
Reconstitution	sterile H2O

 Tel: 1-631-559-9269 1-516-512-3133

 Email: info@creative-biomart.com  Fax: 1-631-938-8127

 45-1 Ramsey Road, Shirley, NY 11967, USA

GENE INFORMATION

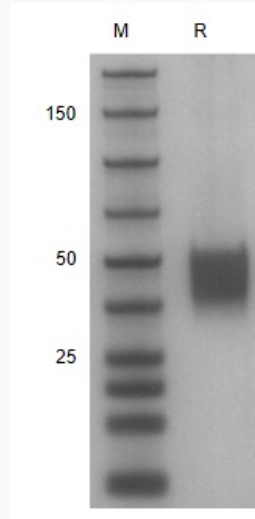
Gene Name	KITLG KIT ligand [Homo sapiens]
Official Symbol	KITLG
Synonyms	KITLG; KIT ligand; MGF; kit ligand; familial progressive hyperpigmentation 2; FPH2; Kitl; KL 1; mast cell growth factor; SCF; SF; steel factor; stem cell factor; c-Kit ligand; KL-1; SHEP7; kit-ligand; DKFZp686F2250;
Gene ID	4254
mRNA Refseq	NM_000899
Protein Refseq	NP_000890
MIM	184745
UniProt ID	P21583

 Tel: 1-631-559-9269 1-516-512-3133

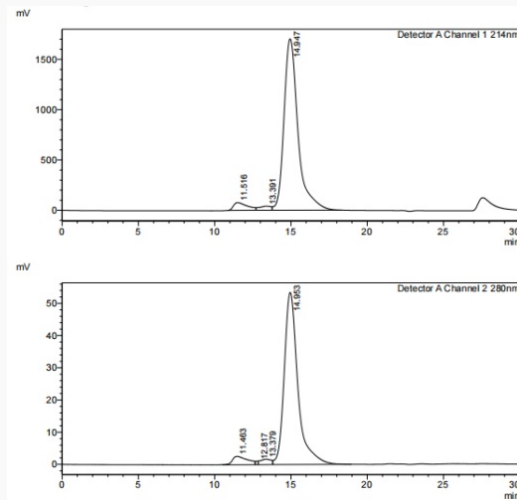
 Email: info@creative-biomart.com  Fax: 1-631-938-8127

 45-1 Ramsey Road, Shirley, NY 11967, USA

SDS-PAGE



SDS-HPLC

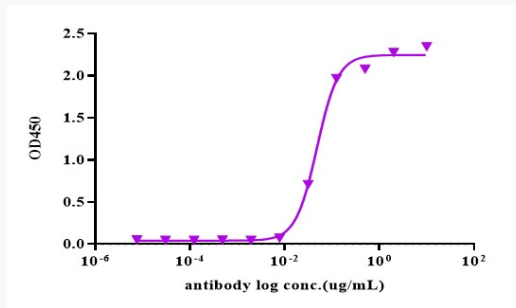


 Tel: 1-631-559-9269 1-516-512-3133

 Email: info@creative-biomart.com  Fax: 1-631-938-8127

 45-1 Ramsey Road, Shirley, NY 11967, USA

ELISA



 Tel: 1-631-559-9269 1-516-512-3133

 Email: info@creative-biomart.com  Fax: 1-631-938-8127

 45-1 Ramsey Road, Shirley, NY 11967, USA