

Recombinant Chicken KITLG Protein

Cat. No. KITLG-38C Lot. No. (See product label)

SPECIFICATION

Product Overview	Recombinant Chicken KITLG was produced in E. coli.
Species	Chicken
Source	E.coli
Form	Liquid. In 1*PBS pH 7.4
Molecular Mass	~22.4 kDa
Endotoxin	< 1.0 EU per µg of the protein as determined by the LAL method
Purity	>95% as determined by SDS-PAGE.
Storage	Short Term Storage at +4 centigrade, Long Term, please prepare aliquots with 20% glycerol and store at -20~-80 centigrade. Avoid freeze/thaw cycles.

GENE INFORMATION

Gene Name	KITLG KIT ligand [Gallus gallus]
Official Symbol	KITLG
Synonyms	C-kit ligand; KIT ligand precursor form 1; KIT ligand precursor form 4; MGF; SCF; mast cell growth factor; stem cell factor

 Tel: 1-631-559-9269 1-516-512-3133

 Email: info@creative-biomart.com  Fax: 1-631-938-8127

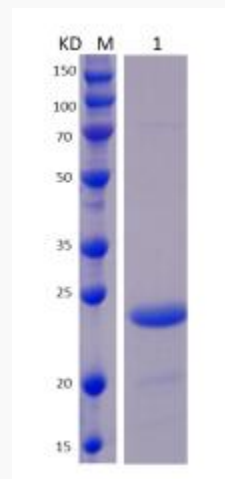
 45-1 Ramsey Road, Shirley, NY 11967, USA

Gene ID 396028

mRNA Refseq NM_001105315

Protein Refseq NP_001098785

UniProt ID Q09108



Tel: 1-631-559-9269 1-516-512-3133

Email: info@creative-biomart.com Fax: 1-631-938-8127

45-1 Ramsey Road, Shirley, NY 11967, USA