

Recombinant Human KIT Ligand

Cat. No. KITLG-436H **Lot. No.** (See product label)

SPECIFICATION

Product Overview	Recombinant Human KIT Ligand is expressed in <i>Drosophila S2 insect cells</i> .
Species	Human
Source	S2 Cells
Description	<p>Stem cell factor (SCF, kit ligand) is a type I membrane glycoprotein with 5 potential N-linked glycosylation sites. Soluble SCF is produced by proteolytic cleavage of the ECD. SCF is expressed primarily by fibroblasts however expression has also been detected in keratinocytes, mature granulocytes, Sertoli cells and bone marrow stromal cells. Functionally, SCF is involved in steady state maintenance of hematopoiesis and mediates the proliferation of myeloid, erythroid and lymphoid progenitors in bone marrow cultures. It has been shown to act synergistically with colony stimulating factors such as G-CSF and erythropoietin as well as interleukins. SCF is also involved in gametogenesis, melanogenesis and the membrane bound form of SCF mediates cell-cell adhesion.</p>
Concentration	0.105 mg/ml.
Molecular Weight	The methionyl form of the S2 expressed mature human SCF contains 188 amino acid residues (including a C-terminal His6-tag) and has a molecular mass of 21 kDa.
Purity	≥ 95%, as determined by SDS-PAGE.
Endotoxin Level	< 0.1 ng per 1 µg (< 1000 EU/mg), as determined by LAL gel clot test.

 Tel: 1-631-559-9269 1-516-512-3133

 Email: info@creative-biomart.com  Fax: 1-631-938-8127

 45-1 Ramsey Road, Shirley, NY 11967, USA

Biosafety	The manufacturing process includes the following two steps: Chemical inactivation of potential viruses (solvent/detergent inactivation); Virus removal through nanofiltration.
Formulation	Lyophilized from a protein solution in PBS without any carrier materials and preservatives.
Storage	-20°C to -80°C. Avoid repeated freeze-thaw cycles.

GENE INFORMATION

Gene Name	KITLG KIT ligand [Homo sapiens]
Synonyms	KITLG; KIT ligand; SF; MGF; SCF; FPH2; KL-1; Kitl; SHEP7; DKFZp686F2250; KITLG; steel factor; stem cell factor; mast cell growth factor; familial progressive hyperpigmentation 2; C-kit ligand; Mast cell growth factor; Stem cell factor
Gene ID	4254
mRNA Refseq	NM_000899
Protein Refseq	NP_000890
MIM	184745
UniProt ID	P21583
Chromosome Location	12q22
Pathway	Cytokine-cytokine receptor interaction; Hematopoietic cell lineage; Melanogenesis; Pathways in cancer

 Tel: 1-631-559-9269 1-516-512-3133

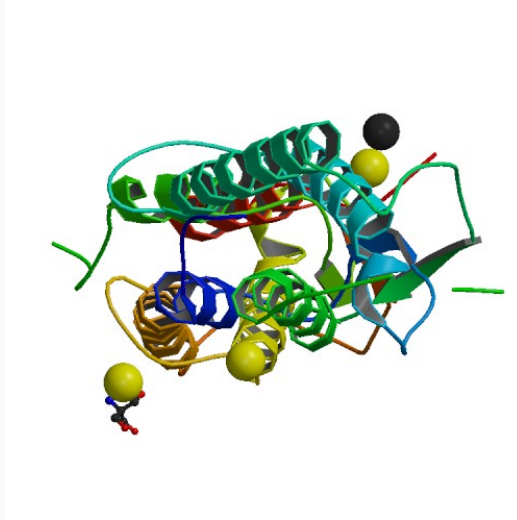
 Email: info@creative-biomart.com  Fax: 1-631-938-8127

 45-1 Ramsey Road, Shirley, NY 11967, USA

Function

growth factor activity; identical protein binding; stem cell factor receptor binding

PDB rendering based
on 1exz.



 Tel: 1-631-559-9269 1-516-512-3133

 Email: info@creative-biomart.com  Fax: 1-631-938-8127

 45-1 Ramsey Road, Shirley, NY 11967, USA