

## Active Recombinant Pig KITLG protein, His-tagged

Cat. No. KITLG-450P Lot. No. (See product label)

### SPECIFICATION

<b>Product Overview</b>	Active Recombinant Pig KITLG protein(Q29030)(25~191 aa), fused with N-terminal His tag, was expressed in HEK293.
<b>Species</b>	Pig
<b>Source</b>	HEK293
<b>ProteinLength</b>	25-191 aa
<b>Form</b>	Lyophilized from sterile PBS, pH7.4, containing 0.01% SKL, 1mM DTT, 5% Trehalose and Proclin300.
<b>Bio-activity</b>	Stem cell factor (SCF), also known as mast cell growth factor (MGF), and steel factor (SLF), plays an important role in hematopoiesis, spermatogenesis, and melanogenesis. SCF has been shown to stimulate the proliferation of TF-1 cells. To test this effect, TF-1 cells were seeded into triplicate wells of 96-well plates at a density of 1x10 <sup>4</sup> cells/well and incubated for 72h in the presence or absence of various concentrations of SCF at 37°C. The growth of cells were observed by inverted microscope and cell proliferation was measured by Cell Counting Kit-8 (CCK-8). Briefly, 10μ of CCK-8 solution was added to each well of the plate, then measure the absorbance at 450nm using a microplate reader after incubating the plate for 1-4 hours at 37°C.
<b>Molecular Mass</b>	20.4kDa

 Tel: 1-631-559-9269 1-516-512-3133

 Email: [info@creative-biomart.com](mailto:info@creative-biomart.com)  Fax: 1-631-938-8127

 45-1 Ramsey Road, Shirley, NY 11967, USA

<b>Endotoxin</b>	<1.0EU per 1µg (determined by the LAL method).
<b>Purity</b>	> 95% as determined by SDS-PAGE.
<b>Storage</b>	Avoid repeated freeze/thaw cycles. Store at -20°C for 12 months. Aliquot and store at -80°C for 12 months.
<b>Reconstitution</b>	Reconstitute in 10mM PBS (pH7.4) to a concentration of 0.1-1.0 mg/mL. Do not vortex.

## GENE INFORMATION

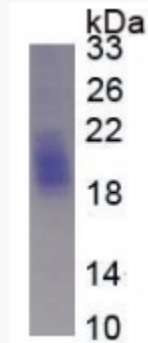
<b>Gene Name</b>	KITLG KIT ligand [ <i>Sus scrofa</i> ]
<b>Official Symbol</b>	KITLG
<b>Synonyms</b>	KITLG; KIT ligand; kit ligand; MGF; SCF; c-kit ligand; stem cell factor; mast cell growth factor; KITL;
<b>Gene ID</b>	397509
<b>mRNA Refseq</b>	NM_214269
<b>Protein Refseq</b>	NP_999434

 Tel: 1-631-559-9269 1-516-512-3133

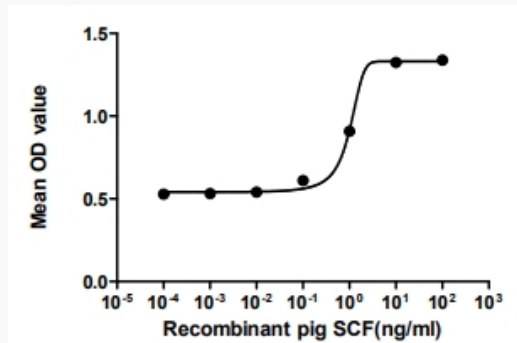
 Email: [info@creative-biomart.com](mailto:info@creative-biomart.com)  Fax: 1-631-938-8127

 45-1 Ramsey Road, Shirley, NY 11967, USA

**SDS-PAGE**



**Activity**



 Tel: 1-631-559-9269 1-516-512-3133

 Email: [info@creative-biomart.com](mailto:info@creative-biomart.com)  Fax: 1-631-938-8127

 45-1 Ramsey Road, Shirley, NY 11967, USA