

Recombinant Dog KITLG protein, rFc-tagged

Cat. No. KITLG-4633D Lot. No. (See product label)

SPECIFICATION

Product Overview	Recombinant Dog KITLG protein(Q06220)(Lys26-Gln215), fused with C-terminal rFc tag, was expressed in HEK293.
Species	Dog
Source	HEK293
Form	Lyophilized from 0.22 µm filtered solution in PBS, pH 7.4. Normally 5% trehalose and 5% mannitol are added as protectants before lyophilization.
Molecular Mass	47.3 kDa
Endotoxin	<0.1 EU/ug protein, LAL method
Purity	>90 %, SDS-PAGE
Storage	It is recommended that the protein be aliquoted for optimal storage. Avoid repeated freeze-thaw cycles. Until expiry date, -20°C to -80°C as lyophilized proteins. 3 months, -20°C to -80°C under sterile conditions after reconstitution.
Reconstitution	Briefly centrifuge the tube before opening. Reconstitute at 0.1-0.5 mg/mL in sterile water.

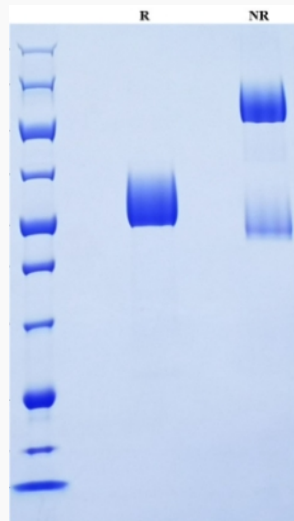
GENE INFORMATION

 Tel: 1-631-559-9269 1-516-512-3133

 Email: info@creative-biomart.com  Fax: 1-631-938-8127

 45-1 Ramsey Road, Shirley, NY 11967, USA

Gene Name	KITLG KIT ligand [<i>Canis lupus familiaris</i>]
Official Symbol	KITLG
Synonyms	KITLG; KIT ligand; kit ligand; SCF; c-kit ligand; stem cell factor, CSF; mast cell growth factor; CSF; MGF; 710-712;
Gene ID	403507
mRNA Refseq	NM_001012735
Protein Refseq	NP_001012753

SDS-PAGE

 Tel: 1-631-559-9269 1-516-512-3133

 Email: info@creative-biomart.com  Fax: 1-631-938-8127

 45-1 Ramsey Road, Shirley, NY 11967, USA