

# Active Recombinant Human KITLG protein, His&hFc-tagged

**Cat. No.** KITLG-4990H    **Lot. No.** (See product label)

## SPECIFICATION

<b>Product Overview</b>	Active Recombinant Human KITLG protein(P21583)(26~189 aa), fused with N-terminal His tag and C-terminal hFc tag, was expressed in HEK293.
<b>Species</b>	Human
<b>Source</b>	HEK293
<b>ProteinLength</b>	26-189 aa
<b>Form</b>	Lyophilized from sterile PBS, pH7.4, containing 0.01% SKL, 1mM DTT, 5% Trehalose and Proclin300.
<b>Bio-activity</b>	Stem cell factor (SCF), also known as mast cell growth factor (MGF), and steel factor (SLF), plays an important role in hematopoiesis, spermatogenesis and melanogenesis. SCF has been shown to stimulate the proliferation of TF-1 cells. To test this effect, TF-1 cells were seeded into triplicate wells of 96-well plates at a density of $2 \times 10^4$ cells/well and incubated for 72h in the presence or absence of various concentrations of SCF at 37°C. The growth of cells were observed by inverted microscope and cell proliferation was measured by Cell Counting Kit-8(CCK-8). Briefly, 10 $\mu$ l CCK-8 solution was added to each well of the plate, then measure the absorbance at 450 nm using a microplate reader after incubating the plate for 1-4 hours at 37°C. Cell proliferation of TF-1 cells after incubation with SCF for 72h observed by inverted microscope was shown. The dose-effect curve of SCF was shown. It was obvious that it significantly promoted cell proliferation of TF-1 cells. The

 Tel: 1-631-559-9269    1-516-512-3133

 Email: [info@creative-biomart.com](mailto:info@creative-biomart.com)     Fax: 1-631-938-8127

 45-1 Ramsey Road, Shirley, NY 11967, USA

ED50 for this effect is typically 3.9 ng/ml.

**Molecular Mass** 49.5kDa

**Endotoxin** <1.0EU per 1µg (determined by the LAL method).

**Purity** > 90% as determined by SDS-PAGE.

**Storage** Avoid repeated freeze/thaw cycles. Store at -20°C for 12 months. Aliquot and store at -80°C for 12 months.

**Reconstitution** Reconstitute in 10mM PBS (pH7.4) to a concentration of 0.1-1.0 mg/mL. Do not vortex.

## GENE INFORMATION

**Gene Name** [KITLG KIT ligand \[ Homo sapiens \]](#)

**Official Symbol** [KITLG](#)

**Synonyms** [KITLG](#); [KIT ligand](#); [MGF](#); [kit ligand](#); [familial progressive hyperpigmentation 2](#); [FPH2](#); [Kitl](#); [KL 1](#); [mast cell growth factor](#); [SCF](#); [SF](#); [steel factor](#); [stem cell factor](#); [c-Kit ligand](#); [KL-1](#); [SHEP7](#); [kit-ligand](#); [DKFZp686F2250](#);

**Gene ID** [4254](#)

**mRNA Refseq** [NM\\_000899](#)

**Protein Refseq** [NP\\_000890](#)

**MIM** [184745](#)

 Tel: 1-631-559-9269 1-516-512-3133

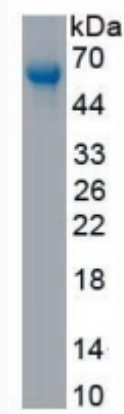
 Email: [info@creative-biomart.com](mailto:info@creative-biomart.com)  Fax: 1-631-938-8127

 45-1 Ramsey Road, Shirley, NY 11967, USA

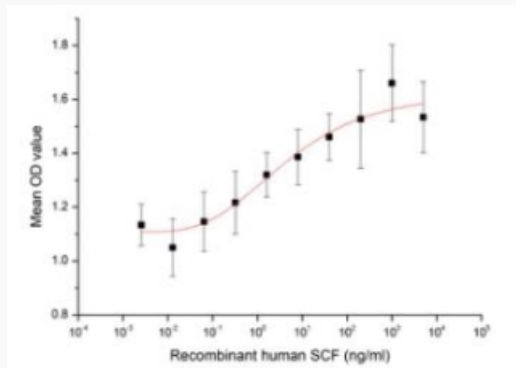
UniProt ID

P21583

SDS-PAGE



Activity



 Tel: 1-631-559-9269 1-516-512-3133

 Email: [info@creative-biomart.com](mailto:info@creative-biomart.com)  Fax: 1-631-938-8127

 45-1 Ramsey Road, Shirley, NY 11967, USA