

Recombinant Human KITLG protein

Cat. No. KITLG-5873H **Lot. No.** (See product label)

SPECIFICATION

Product Overview	Recombinant Human KITLG protein(P21583-1)(Glu26-Ala189) was expressed in E.coli.
Species	Human
ProteinLength	Glu26-Ala189
Tag	N/A
Form	Supplied as 0.22µm filtered solution in PBS (pH 7.4).
Bio-activity	Immobilized Human SCF at 5µg/ml (100µl/well) on the plate. Dose response curve for Human CD117, His Tag with the EC50 of 0.90µg/ml determined by ELISA.
Molecular Mass	The protein has a predicted MW of 18.45 kDa same as Tris-Bis PAGE result.
Endotoxin	Less than 1EU per µg by the LAL method.
Purity	> 95% as determined by Tris-Bis PAGE; > 95% as determined by HPLC.
Storage	Valid for 12 months from date of receipt when stored at -80°C.;Recommend to aliquot the protein into smaller quantities for optimal storage. Please do not repeated freeze-thaw cycles.
Reconstitution	It is recommended that sterile water be added to the vial to prepare a stock solution of

 Tel: 1-631-559-9269 1-516-512-3133

 Email: info@creative-biomart.com  Fax: 1-631-938-8127

 45-1 Ramsey Road, Shirley, NY 11967, USA

0.2 ug/ul. Centrifuge the vial at 4°C before opening to recover the entire contents.

GENE INFORMATION

Gene Name	KITLG KIT ligand [Homo sapiens]
Official Symbol	KITLG
Synonyms	KITLG; KIT ligand; MGF; kit ligand; familial progressive hyperpigmentation 2; FPH2; Kitl; KL 1; mast cell growth factor; SCF; SF; steel factor; stem cell factor; c-Kit ligand; KL-1; SHEP7; kit-ligand; DKFZp686F2250;
Gene ID	4254
mRNA Refseq	NM_000899
Protein Refseq	NP_000890
MIM	184745
UniProt ID	P21583
Gene Name 2	KITLG KIT ligand [Homo sapiens]
Official Symbol 2	KITLG
Synonyms 2	KITLG; KIT ligand; MGF; kit ligand; familial progressive hyperpigmentation 2; FPH2; Kitl; KL 1; mast cell growth factor; SCF; SF; steel factor; stem cell factor; c-Kit ligand; KL-1; SHEP7; kit-ligand; DKFZp686F2250;
Gene ID 2	4254

 Tel: 1-631-559-9269 1-516-512-3133

 Email: info@creative-biomart.com  Fax: 1-631-938-8127

 45-1 Ramsey Road, Shirley, NY 11967, USA

mRNA Refseq 2 NM_000899

Protein Refseq 2 NP_000890

MIM 2 184745

UniProt ID 2 P21583

Tris-Bis PAGE

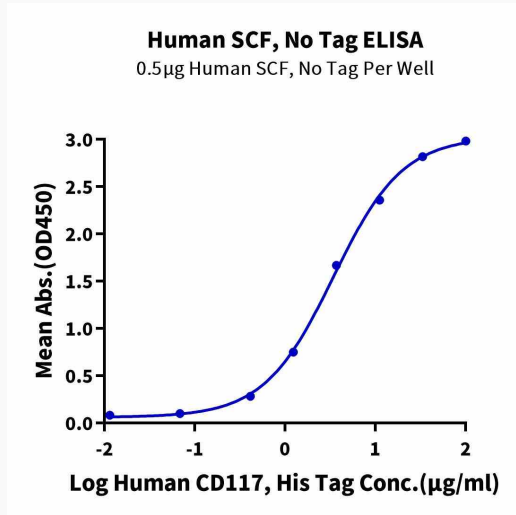


 Tel: 1-631-559-9269 1-516-512-3133

 Email: info@creative-biomart.com  Fax: 1-631-938-8127

 45-1 Ramsey Road, Shirley, NY 11967, USA

ELISA



 Tel: 1-631-559-9269 1-516-512-3133

 Email: info@creative-biomart.com  Fax: 1-631-938-8127

 45-1 Ramsey Road, Shirley, NY 11967, USA