

## Recombinant Human KL Protein (Glu34-Ser981), N-His tagged

Cat. No. KL-3302H Lot. No. (See product label)

### SPECIFICATION

<b>Product Overview</b>	Recombinant human KL (Glu34-Ser981) protein fused with the N-His tag was expressed in E. coli.
<b>Species</b>	Human
<b>Source</b>	E.coli
<b>ProteinLength</b>	Glu34-Ser981
<b>Description</b>	This gene encodes a type-I membrane protein that is related to beta-glucosidases. Reduced production of this protein has been observed in patients with chronic renal failure (CRF), and this may be one of the factors underlying the degenerative processes (e.g., arteriosclerosis, osteoporosis, and skin atrophy) seen in CRF. Also, mutations within this protein have been associated with ageing and bone loss.
<b>Molecular Mass</b>	111.35 kDa
<b>Purity</b>	>90 % as determined by SDS-PAGE.
<b>Notes</b>	For research use only.
<b>Storage</b>	Use a manual defrost freezer and avoid repeated freeze thaw cycles. Store at 2 to 8 centigrade for one week. Store at -20 to -80 centigrade for twelve months from the date of receipt.

 Tel: 1-631-559-9269 1-516-512-3133

 Email: [info@creative-biomart.com](mailto:info@creative-biomart.com)  Fax: 1-631-938-8127

 45-1 Ramsey Road, Shirley, NY 11967, USA

<b>Storage Buffer</b>	0.01M PBS, pH 7.4, 0.02 % NLS
<b>Reconstitution</b>	Reconstitute in sterile water for a stock solution.
<b>Shipping</b>	In general, proteins are provided as lyophilized powder/frozen liquid. They are shipped out with dry ice/blue ice unless customers require otherwise.

## GENE INFORMATION

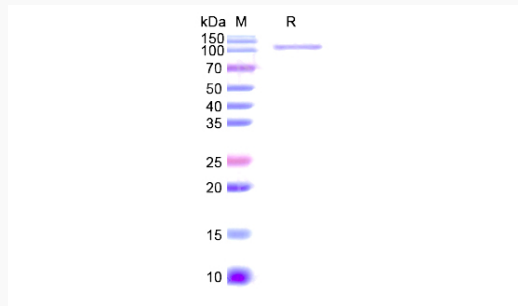
<b>Gene Name</b>	KL klotho [ Homo sapiens (human) ]
<b>Official Symbol</b>	KL
<b>Synonyms</b>	KL; klotho;
<b>Gene ID</b>	9365
<b>mRNA Refseq</b>	NM_004795
<b>Protein Refseq</b>	NP_004786
<b>MIM</b>	604824
<b>UniProt ID</b>	Q9UEF7

 Tel: 1-631-559-9269 1-516-512-3133

 Email: [info@creative-biomart.com](mailto:info@creative-biomart.com)  Fax: 1-631-938-8127

 45-1 Ramsey Road, Shirley, NY 11967, USA

**SDS-PAGE**



 Tel: 1-631-559-9269 1-516-512-3133

 Email: [info@creative-biomart.com](mailto:info@creative-biomart.com)  Fax: 1-631-938-8127

 45-1 Ramsey Road, Shirley, NY 11967, USA