

Recombinant Human KLB Protein (Lys2-Pro995), N-His tagged

Cat. No. KLB-3694H Lot. No. (See product label)

SPECIFICATION

Product Overview	Recombinant human KLB (Lys2-Pro995) protein fused with the N-terminal His tag was expressed in E. coli.
Species	Human
Source	E.coli
ProteinLength	Lys2-Pro995
Molecular Mass	108.59 kDa
Purity	>90 % as determined by SDS-PAGE.
Notes	For research use only.
Storage	Use a manual defrost freezer and avoid repeated freeze thaw cycles. Store at 2 to 8 centigrade for one week. Store at -20 to -80 centigrade for twelve months from the date of receipt.
Storage Buffer	Supplied as solution form in PBS, pH 7.5 or lyophilized from PBS, pH 7.5.
Reconstitution	Reconstitute in sterile water for a stock solution.
Shipping	In general, proteins are provided as lyophilized powder/frozen liquid. They are shipped out with dry ice/blue ice unless customers require otherwise.

 Tel: 1-631-559-9269 1-516-512-3133

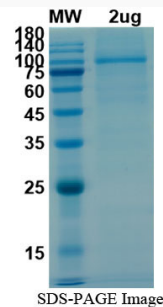
 Email: info@creative-biomart.com  Fax: 1-631-938-8127

 45-1 Ramsey Road, Shirley, NY 11967, USA

GENE INFORMATION

Gene Name	KLB klotho beta [Homo sapiens (human)]
Official Symbol	KLB
Synonyms	KLB; klotho beta; beta-klotho; betaKlotho; klotho beta like; klotho beta-like protein; BKL; MGC142213;
Gene ID	152831
mRNA Refseq	NM_175737
Protein Refseq	NP_783864
MIM	611135
UniProt ID	Q86Z14

SDS-PAGE



Tel: 1-631-559-9269 1-516-512-3133

Email: info@creative-biomart.com Fax: 1-631-938-8127

45-1 Ramsey Road, Shirley, NY 11967, USA