

Recombinant Human KLB Protein (Lys2-Pro996), N-His tagged

Cat. No. KLB-3695H Lot. No. (See product label)

SPECIFICATION

Product Overview	Recombinant human KLB/Beta-klotho (Lys2-Pro996) protein fused with the N-His tag was expressed in E. coli.
Species	Human
Source	E.coli
ProteinLength	Lys2-Pro996
Molecular Mass	115.26 kDa
Purity	>90 % as determined by SDS-PAGE.
Notes	For research use only.
Storage	Use a manual defrost freezer and avoid repeated freeze thaw cycles. Store at 2 to 8 centigrade for one week. Store at -20 to -80 centigrade for twelve months from the date of receipt.
Storage Buffer	0.01M PBS, pH 7.4, 0.02 % NLS
Reconstitution	Reconstitute in sterile water for a stock solution.
Shipping	In general, proteins are provided as lyophilized powder/frozen liquid. They are shipped out with dry ice/blue ice unless customers require otherwise.

 Tel: 1-631-559-9269 1-516-512-3133

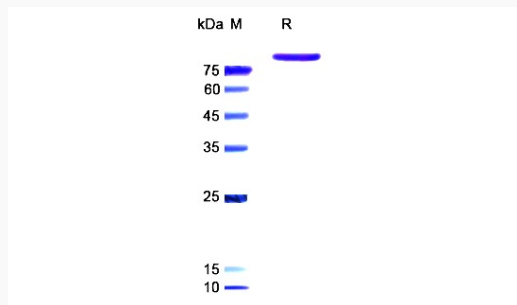
 Email: info@creative-biomart.com  Fax: 1-631-938-8127

 45-1 Ramsey Road, Shirley, NY 11967, USA

GENE INFORMATION

Gene Name	KLB klotho beta [Homo sapiens (human)]
Official Symbol	KLB
Synonyms	KLB; klotho beta; beta-klotho; betaKlotho; klotho beta like; klotho beta-like protein; BKL; MGC142213;
Gene ID	152831
mRNA Refseq	NM_175737
Protein Refseq	NP_783864
MIM	611135
UniProt ID	Q86Z14

SDS-PAGE



Tel: 1-631-559-9269 1-516-512-3133

Email: info@creative-biomart.com Fax: 1-631-938-8127

45-1 Ramsey Road, Shirley, NY 11967, USA