

Recombinant Human KLC1 Protein (Met1-Val254), N-His tagged

Cat. No. KLC1-2736H **Lot. No.** (See product label)

SPECIFICATION

Product Overview	Recombinant human KLC1 (Met1-Val254) protein fused with the N-His tag was expressed in E. coli.
Species	Human
Source	E.coli
ProteinLength	Met1-Val254
Molecular Mass	31.35 kDa
Purity	>90 % as determined by SDS-PAGE.
Notes	For research use only.
Storage	Use a manual defrost freezer and avoid repeated freeze thaw cycles. Store at 2 to 8 centigrade for one week. Store at -20 to -80 centigrade for twelve months from the date of receipt.
Storage Buffer	0.01M PBS, pH 7.4, 0.02 % NLS
Reconstitution	Reconstitute in sterile water for a stock solution.
Shipping	In general, proteins are provided as lyophilized powder/frozen liquid. They are

 Tel: 1-631-559-9269 1-516-512-3133

 Email: info@creative-biomart.com  Fax: 1-631-938-8127

 45-1 Ramsey Road, Shirley, NY 11967, USA

shipped out with dry ice/blue ice unless customers require otherwise.

GENE INFORMATION

Gene Name [KLC1 kinesin light chain 1 \[Homo sapiens \(human\) \]](#)

Official Symbol [KLC1](#)

Synonyms [KLC1](#); kinesin light chain 1; kinesin 2, kinesin 2 60/70kDa, KNS2; hKLC1B; hKLC1G; hKLC1J; hKLC1N; hKLC1P; hKLC1R; hKLC1S; KLC; KNS2A; KLC 1; kinesin 2 60/70kDa; medulloblastoma antigen MU-MB-2.50; KNS2; MGC15245;

Gene ID [3831](#)

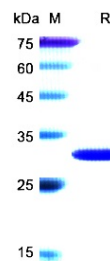
mRNA Refseq [NM_001130107](#)

Protein Refseq [NP_001123579](#)

MIM [600025](#)

UniProt ID [Q07866](#)

SDS-PAGE



 Tel: 1-631-559-9269 1-516-512-3133

 Email: info@creative-biomart.com  Fax: 1-631-938-8127

 45-1 Ramsey Road, Shirley, NY 11967, USA