

# Recombinant Full Length Human KLC2 Protein, C-Flag-tagged

Cat. No. KLC2-1945HFL Lot. No. (See product label)

## SPECIFICATION

<b>Product Overview</b>	Recombinant Full Length Human KLC2 Protein, fused to Flag-tag at C-terminus, was expressed in Mammalian cells.
<b>Species</b>	Human
<b>Source</b>	Mammalian Cells
<b>Description</b>	The protein encoded by this gene is a light chain of kinesin, a molecular motor responsible for moving vesicles and organelles along microtubules. Defects in this gene are a cause of spastic paraplegia, optic atrophy, and neuropathy (SPOAN) syndrome.
<b>Form</b>	25 mM Tris HCl, pH 7.3, 100 mM glycine, 10% glycerol.
<b>Molecular Mass</b>	68.8 kDa
<b>AA Sequence</b>	MAMMVFPREEKLSQDEIVLGTKAVIQGLETLRGEHRALLAPLVAPEAGEAEPGSQER CILLRRSLEAIEL GLGEAQVILALSSHLGAVESEKQKLRAQVRRLVQENQWLREELA GTQQKLRSEQAVAQLEEEKQHLLFM SQIRKLDEDEASPNEEKGDVPKDTLDDLFPN EDEQSPAPSPGGGDVSGQHGGYEIPARLRTLHNLVIQYAS QGRYEVAVPLCKQAL EDLEKTSGHDHPDVATMLNILALVYRDQNKYKEAAHLLNDALAIKREKTLGKDHPA VA ATLNNLAVLYGKRGKYKEAEPLCKRALEIREKVLGKFHPDVAKQLSNLALLCQNQGK AEEVEYYYRRA LEIYATRLGPDDPNVAKTKNNLASCYLKQGKYQDAETLYKEILTRA HEKEFGSVNGDNKPIWMHAEEREE SKDKRRDSAPYGEYGSWYKACKVDSPTVNT TLRSLGALYRRQGKLEAAHTLEDCASRNKQGLDPASQTK VVELLKDGSGRRGDR

 Tel: 1-631-559-9269 1-516-512-3133

 Email: [info@creative-biomart.com](mailto:info@creative-biomart.com)  Fax: 1-631-938-8127

 45-1 Ramsey Road, Shirley, NY 11967, USA

RSSRDMAGGAGPRSESDLEDVGPTAEWNGDGGSLRRSGSFGKLRDALRRSSEM  
 L VKKLQGGTPQEPPNPRMKRASSLNFLNKSVEEPTQPGGTGLSDSRTLSSSSMDL  
 SRRSSLVG TRTRPLEQKLISEEDLAANDILDYKDDDDKV

**Purity** > 80% as determined by SDS-PAGE and Coomassie blue staining.

**Stability** Stable for 12 months from the date of receipt of the product under proper storage and handling conditions. Avoid repeated freeze-thaw cycles.

**Storage** Store at -80 centigrade.

**Concentration** >50 ug/mL as determined by microplate BCA method.

**Preparation** Recombinant protein was captured through anti-DDK affinity column followed by conventional chromatography steps.

**Protein Families** Druggable Genome

**Full Length** Full L.

## GENE INFORMATION

**Gene Name** [KLC2 kinesin light chain 2 \[ Homo sapiens \(human\) \]](#)

**Official Symbol** [KLC2](#)

**Synonyms** SPOAN

**Gene ID** [64837](#)

**mRNA Refseq** [NM\\_001134775.2](#)

 Tel: 1-631-559-9269 1-516-512-3133

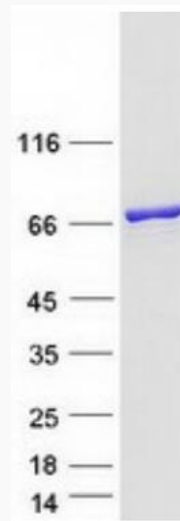
 Email: [info@creative-biomart.com](mailto:info@creative-biomart.com)  Fax: 1-631-938-8127

 45-1 Ramsey Road, Shirley, NY 11967, USA

**Protein Refseq** NP\_001128247.1

**MIM** 611729

**UniProt ID** Q9H0B6



Coomassie blue staining of purified KLC2 protein.

 Tel: 1-631-559-9269 1-516-512-3133

 Email: [info@creative-biomart.com](mailto:info@creative-biomart.com)  Fax: 1-631-938-8127

 45-1 Ramsey Road, Shirley, NY 11967, USA