

Recombinant Human KLC2 Protein, Myc/DDK-tagged, C13 and N15-labeled

Cat. No. KLC2-5632H **Lot. No.** (See product label)

SPECIFICATION

Product Overview	KLC2 MS Standard C13 and N15-labeled recombinant protein (NP_001128248) with a C-terminal MYC/DDK tag, was expressed in HEK293 cells.
Species	Human
Source	HEK293
Description	The protein encoded by this gene is a light chain of kinesin, a molecular motor responsible for moving vesicles and organelles along microtubules. Defects in this gene are a cause of spastic paraplegia, optic atrophy, and neuropathy (SPOAN) syndrome.
Molecular Mass	68.9 kDa
AA Sequence	MAMMVFPREEKLSQDEIVLGTKAVIQGLETLRGEHRALLAPLVAPEAGEAEPGSQER CILLRRSLEAIELGLGEAQVILALSSHLGAVESEKQKLRAQVRRLVQENQWLREELAG TQQKLQRSEQAVAQLEEEKQHLLFMSQIRKLDEDEASPNEEKGDVPKDTLDDLFPNE DEQSPAPSPGGGDVSGQHGGYEIPARLRTLHNLVIQYASQGRYEVAVPLCKQALED LEKTSGHDHPDVATMLNILALVYRDQNKYKEAAHLLNDALAIREKTLGKDHPAVAATL NNLAVLYGKRGKYKEAEPLCKRALEIREKVLGKFHPDVAKQLSNLALLCQNQGKAAE VEYYYRRALEIYATRLGPDDPNVAKTKNNLASCYLKQGKYQDAETLYKEILTRAHEK EFGSVNGDNKPIWMHAEEREESKDKRRDSAPYGEYGSWYKACKVDSPTVNTTLRS LGALYRRQGKLEAAHTLEDCASNRNKQGLDPASQTKVVELLKDGSGRRGDRRSSR

 Tel: 1-631-559-9269 1-516-512-3133

 Email: info@creative-biomart.com  Fax: 1-631-938-8127

 45-1 Ramsey Road, Shirley, NY 11967, USA

DMAGGAGPRSESDLEDVGPTAEWNGDGGSGSLRRSGSFGKLRDALRRSSEMLVKK
 LGGGTPQEPPNPRMKRASSLNFLNKSVEEPTQPGGTGLSDSRTLSSSSMDLSRRS
 SLVGTRTRPLEQKLISEEDLAANDILDYKDDDDKV

Purity > 80% as determined by SDS-PAGE and Coomassie blue staining

Stability Stable for 3 months from receipt of products under proper storage and handling conditions.

Storage Store at -80 centigrade. Avoid repeated freeze-thaw cycles.

Concentration 50 µg/mL as determined by BCA

Storage Buffer 100 mM glycine, 25 mM Tris-HCl, pH 7.3.

GENE INFORMATION

Gene Name [KLC2 kinesin light chain 2 \[Homo sapiens \(human\) \]](#)

Official Symbol [KLC2](#)

Synonyms KLC2; kinesin light chain 2; FLJ12387; KLC 2;

Gene ID [64837](#)

mRNA Refseq [NM_001134776](#)

Protein Refseq [NP_001128248](#)

MIM [611729](#)

 Tel: 1-631-559-9269 1-516-512-3133

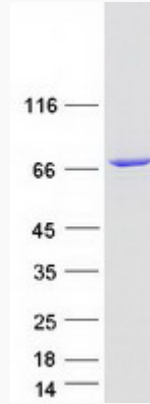
 Email: info@creative-biomart.com  Fax: 1-631-938-8127

 45-1 Ramsey Road, Shirley, NY 11967, USA

UniProt ID

Q9H0B6

SDS-PAGE



 Tel: 1-631-559-9269 1-516-512-3133

 Email: info@creative-biomart.com  Fax: 1-631-938-8127

 45-1 Ramsey Road, Shirley, NY 11967, USA