

Recombinant Human KLC3 Protein (1-504 aa), His-SUMO-tagged

Cat. No. KLC3-1975H **Lot. No.** (See product label)

SPECIFICATION

Product Overview Recombinant Human KLC3 Protein (1-504 aa) is produced by E. coli expression system. This protein is fused with a 6xHis-SUMO tag at the N-terminal. Research Area: Signal Transduction. Protein Description: Full Length.

Species Human

Source E.coli

ProteinLength 1-504 aa

Description Kinesin is a microtubule-associated force-producing protein that may play a role in organelle transport.

Form Tris-based buffer,50% glycerol

Molecular Mass 71.4 kDa

AA Sequence

```
MSVQVAAPGSAGLGPERLSPEELVRQTRQVVQGLEALRAEHHGLAGHLAEALAGQ
GPAAGLEMLEEKQQVVSHSLEAIELGLGAEQVLLALSAHVGAEAEKQRLRSQARR
LAQENVWLREELEETQRRLRASEESVAQLEEEKRLHLEFLGQLRQYDPPAESQQSES
PPRRDSLASLFPSEEEERKGPAAAGAAAQQGGYEIPARLRTLHNLVIQYAGQGGRY
EVAVPLCRQALEDLERSSSGHCHPDVATMLNILALVYRDQNKYKEATDLLHDALQIRE
QTLGPEHPAVAATLNNLAVLYGKRGRYREAELCQRALEIREKVLGADHPDVAKQL
NNLALLCQNQGKFEDVERHYARALSIYEALGGPHDPNVAKTKNNLASAYLKQNKYQ
```

 Tel: 1-631-559-9269 1-516-512-3133

 Email: info@creative-biomart.com  Fax: 1-631-938-8127

 45-1 Ramsey Road, Shirley, NY 11967, USA

QAEELYKEILHKEDLPAPLGAPNTGTAGDAEQALRRSSSLSKIRESIRRGSEKLVSR
 RGEAAAGAAGMKRAMSLNTLNVDAPRAPGTQFPSWHLDKAPRTLSASTQDLSPH

Purity > 90% as determined by SDS-PAGE.

Notes Repeated freezing and thawing is not recommended. Store working aliquots at 4 centigrade for up to one week.

Storage The shelf life is related to many factors, storage state, buffer ingredients, storage temperature and the stability of the protein itself. Generally, the shelf life of liquid form is 6 months at -20 centigrade/-80 centigrade. The shelf life of lyophilized form is 12 months at -20 centigrade/-80 centigrade.

Concentration A hardcopy of COA with reconstitution instruction is sent along with the products.

GENE INFORMATION

Gene Name [KLC3 kinesin light chain 3 \[Homo sapiens \]](#)

Official Symbol [KLC3](#)

Synonyms KLC3; kinesin light chain 3; KLC2L; KLCt; KNS2B; kinesin light chain 2; KLC2;

Gene ID [147700](#)

mRNA Refseq [NM_177417](#)

Protein Refseq [NP_803136](#)

MIM [601334](#)

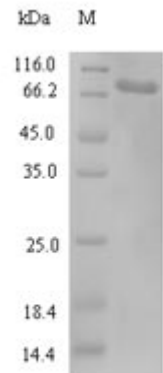
 Tel: 1-631-559-9269 1-516-512-3133

 Email: info@creative-biomart.com  Fax: 1-631-938-8127

 45-1 Ramsey Road, Shirley, NY 11967, USA

UniProt ID

Q6P597



(Tris-Glycine gel) Discontinuous SDS-PAGE (reduced) with 5% enrichment gel and 15% separation gel.

Tel: 1-631-559-9269 1-516-512-3133

Email: info@creative-biomart.com Fax: 1-631-938-8127

45-1 Ramsey Road, Shirley, NY 11967, USA