

Recombinant Human KLC3 Protein (1-504 aa), His-tagged

Cat. No. KLC3-1979H Lot. No. (See product label)

SPECIFICATION

Product Overview	Recombinant Human KLC3 Protein (1-504 aa) is produced by Yeast expression system. This protein is fused with a 6xHis tag at the N-terminal. Research Area: Signal Transduction. Protein Description: Full Length.
Species	Human
Source	Yeast
ProteinLength	1-504 aa
Description	Kinesin is a microtubule-associated force-producing protein that may play a role in organelle transport.
Form	Tris-based buffer,50% glycerol
Molecular Mass	57.4 kDa
AA Sequence	MSVQVAAPGSAGLGPERSPEELVRQTRQVVQGLEALRAEHHGLAGHLAEALAGQ GPAAGLEMLEEKQQVVSHSLEAIELGLGEAQVLLALS AHVGALEAEKQRLRSQARR LAQENVWLREELEETQRRLRASEESVAQLEEEKRLHLEFLGQLRQYDPPAESQQSES PPRRDSLASLFPSEEEERKGPEAAGAAAAQGGYEIPARLRTLHNLVIQYAGQGGRY EVAVPLCRQALEDLERSSSGHCHPDVATMLNILALVYRDQNKYKEATDLLHDALQIRE QTLGPEHPAVAATLNNLAVLYGKRGRYREAEP LCRAL EIREKVLGADHPDVAKQL NNLALLCQNQGKFEDVERHYARALSIYEALGGPHDPNVAKTNNLASAYLKQNKYQ QAEELYKEILHKEDLPAPLGAPNTGTAGDAEQALRRSSSLKIRE SIRRGSEKLVSR L

 Tel: 1-631-559-9269 1-516-512-3133

 Email: info@creative-biomart.com  Fax: 1-631-938-8127

 45-1 Ramsey Road, Shirley, NY 11967, USA

RGEAAAGAAGMKRAMSLNLTNVDAPRAPGTQFPSWHLDKAPRTLSASTQDLSPH

Purity > 90% as determined by SDS-PAGE.

Notes Repeated freezing and thawing is not recommended. Store working aliquots at 4 centigrade for up to one week.

Storage The shelf life is related to many factors, storage state, buffer ingredients, storage temperature and the stability of the protein itself. Generally, the shelf life of liquid form is 6 months at -20 centigrade/-80 centigrade. The shelf life of lyophilized form is 12 months at -20 centigrade/-80 centigrade.

Concentration A hardcopy of COA with reconstitution instruction is sent along with the products.

GENE INFORMATION

Gene Name [KLC3 kinesin light chain 3 \[Homo sapiens \]](#)

Official Symbol [KLC3](#)

Synonyms [KLC3](#); [KLC2L](#); [KLCt](#); [KNS2B](#); [kinesin light chain 2](#); [KLC2](#);

Gene ID [147700](#)

mRNA Refseq [NM_177417](#)

Protein Refseq [NP_803136](#)

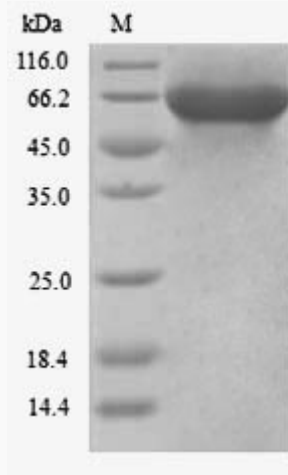
MIM [601334](#)

UniProt ID [Q6P597](#)

 Tel: 1-631-559-9269 1-516-512-3133

 Email: info@creative-biomart.com  Fax: 1-631-938-8127

 45-1 Ramsey Road, Shirley, NY 11967, USA



(Tris-Glycine gel) Discontinuous SDS-PAGE (reduced) with 5% enrichment gel and 15% separation gel.

 Tel: 1-631-559-9269 1-516-512-3133

 Email: info@creative-biomart.com  Fax: 1-631-938-8127

 45-1 Ramsey Road, Shirley, NY 11967, USA