

Recombinant Human KLC4 Protein, Myc/DDK-tagged, C13 and N15-labeled

Cat. No. KLC4-1830H **Lot. No.** (See product label)

SPECIFICATION

Product Overview	KLC4 MS Standard C13 and N15-labeled recombinant protein (NP_958930) with a C-terminal MYC/DDK tag, was expressed in HEK293 cells.
Species	Human
Source	HEK293
Description	Kinesin is a microtubule-associated force-producing protein that may play a role in organelle transport. The light chain may function in coupling of cargo to the heavy chain or in the modulation of its ATPase activity.
Molecular Mass	68.6 kDa
AA Sequence	<p>MSGLVLGQRDEPAGHRLSQEEILGSTRVLSQGLEALRSEHQAVLQSLSQTIECLQQ GGHEEGLVHEKARQLRRSMENIELGLSEAQVMLALASHLSTVESEKQKLRAQVRRLL CQENQWLRDELQAGTQQRLQRSEQAVAQLEEEKKHLEFLGQLRQYDEDGHTSEEKE GDATKDSLDDLPNEEEEDPSNGLSRGQGATAAQGGYEIPARLRTLHNLVIQYAA QGRYEVAVPLCKQALEDLERTSGRGHPDVATMLNILALVYRDQNKYKEAAHLLNDA LSIRESTLGPDHPAVAATLNNLAVLYGKRGKYKEAEPLCQRALEIREKVLGTNHPDV AKQLNNLALLCQNQGKYEAVERYYYQRALAIYEGQLGPDNPNVARTKNNLASCYLKQ GKYAEAEETLYKEILTRAHVQEFQSVDDDHKPIWMHAEEREEMSKSRHHEGGTPYAE YGGWYKACKVSSPTVNTTLRNLGALYRRQGKLEAAETLEECALRSRRQGTDPISQT KVAELLGESDGRRTSQEGPGDSVKFEGGEDASVAVEWSGDGSGLTQRSGSLGKIR</p>

 Tel: 1-631-559-9269 1-516-512-3133

 Email: info@creative-biomart.com  Fax: 1-631-938-8127

 45-1 Ramsey Road, Shirley, NY 11967, USA

DVLRRSSELLVRKLGTEPRPSSSNMKRAASLNYLNQPSAAPLQVSRGLSASTMDL
SSSTRTRPLEQKLISEEDLAANDILDYKDDDDKV

Purity > 80% as determined by SDS-PAGE and Coomassie blue staining

Stability Stable for 3 months from receipt of products under proper storage and handling conditions.

Storage Store at -80 centigrade. Avoid repeated freeze-thaw cycles.

Concentration 50 µg/mL as determined by BCA

Storage Buffer 100 mM glycine, 25 mM Tris-HCl, pH 7.3.

GENE INFORMATION

Gene Name KLC4 kinesin light chain 4 [Homo sapiens (human)]

Official Symbol KLC4

Synonyms KLC4; kinesin light chain 4; kinesin like 8, KNSL8; bA387M24.3; KLC 4; kinesin-like 8; kinesin-like protein 8; KNSL8; MGC111777;

Gene ID 89953

mRNA Refseq NM_201522

Protein Refseq NP_958930

UniProt ID Q9NSK0

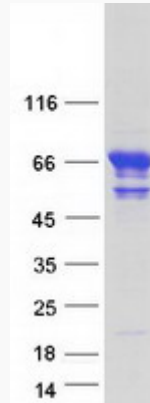
 Tel: 1-631-559-9269 1-516-512-3133

 Email: info@creative-biomart.com  Fax: 1-631-938-8127

 45-1 Ramsey Road, Shirley, NY 11967, USA



SDS-PAGE



Tel: 1-631-559-9269 1-516-512-3133

Email: info@creative-biomart.com Fax: 1-631-938-8127

45-1 Ramsey Road, Shirley, NY 11967, USA