

# Recombinant Human KLF14 Protein, MYC/DDK-tagged, C13 and N15-labeled

**Cat. No.** KLF14-099H    **Lot. No.** (See product label)

## SPECIFICATION

<b>Product Overview</b>	KLF14 MS Standard C13 and N15-labeled recombinant protein (NP_619638) with a C-terminal MYC/DDK tag, was expressed in HEK293 cells.
<b>Species</b>	Human
<b>Source</b>	HEK293
<b>Description</b>	This intronless gene encodes a member of the Kruppel-like family of transcription factors. The encoded protein functions as a transcriptional co-repressor, and is induced by transforming growth factor-beta (TGF-beta) to repress TGF-beta receptor II gene expression. This gene exhibits imprinted expression from the maternal allele in embryonic and extra-embryonic tissues.
<b>Molecular Mass</b>	32.9 kDa
<b>AA Sequence</b>	MSAAVACLDYFAAECLVSMAGAVVHRRPPDPEGAGGAAGSEVGAAHPESALPGP GPSGPASVPQLPQVPAPSPGAGGAAPHLAASVWADLRGSSGEGSWENSGEAPR ASSGFSDPIPCSVQTPCSELAPASGAAAVCAPESSDAPAVPSAPAAPGAPAASGG FSGGALGAGPAPAADQAPRRRSVTPAAKRHQCPFPGCTKAYYKSSHLKSHQRHT GERPFSCDWLDCDKKFTSRDELARHYRHTTGEKRFSCPLCPKQFSRSDHLTKHAR RHPTYHPDMIEYRGRRTPRIDPPLTSEVESSASGSGPGPAPSFTTCLSGPTRRRL EQKLISEEDLAANDILDYKDDDDKV
<b>Purity</b>	> 80% as determined by SDS-PAGE and Coomassie blue staining

 Tel: 1-631-559-9269    1-516-512-3133

 Email: [info@creative-biomart.com](mailto:info@creative-biomart.com)     Fax: 1-631-938-8127

 45-1 Ramsey Road, Shirley, NY 11967, USA

<b>Stability</b>	Stable for 3 months from receipt of products under proper storage and handling conditions.
<b>Storage</b>	Store at -80 centigrade. Avoid repeated freeze-thaw cycles.
<b>Concentration</b>	50 µg/mL as determined by BCA
<b>Storage Buffer</b>	100 mM glycine, 25 mM Tris-HCl, pH 7.3.

## GENE INFORMATION

<b>Gene Name</b>	KLF14 Kruppel like factor 14 [ Homo sapiens (human) ]
<b>Official Symbol</b>	KLF14
<b>Synonyms</b>	KLF14; Kruppel like factor 14; BTEB5; Krueppel-like factor 14; BTE-binding protein 5; basic transcription element-binding protein 5; transcription factor BTEB5
<b>Gene ID</b>	136259
<b>mRNA Refseq</b>	NM_138693
<b>Protein Refseq</b>	NP_619638
<b>MIM</b>	609393
<b>UniProt ID</b>	Q8TD94

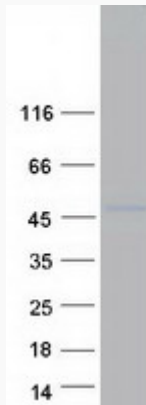
 Tel: 1-631-559-9269 1-516-512-3133

 Email: [info@creative-biomart.com](mailto:info@creative-biomart.com)  Fax: 1-631-938-8127

 45-1 Ramsey Road, Shirley, NY 11967, USA



**SDS-PAGE**



Tel: 1-631-559-9269 1-516-512-3133

Email: [info@creative-biomart.com](mailto:info@creative-biomart.com) Fax: 1-631-938-8127

45-1 Ramsey Road, Shirley, NY 11967, USA