

# Active Recombinant Full Length Human KLF4 Protein, C-Flag-tagged

**Cat. No.** KLF4-271HFL    **Lot. No.** (See product label)

## SPECIFICATION

<b>Product Overview</b>	Recombinant Full Length Human KLF4 Protein, fused to Flag-tag at C-terminus, was expressed in Mammalian cells.
<b>Species</b>	Human
<b>Source</b>	Mammalian Cells
<b>Description</b>	This gene encodes a protein that belongs to the Kruppel family of transcription factors. The encoded zinc finger protein is required for normal development of the barrier function of skin. The encoded protein is thought to control the G1-to-S transition of the cell cycle following DNA damage by mediating the tumor suppressor gene p53. Mice lacking this gene have a normal appearance but lose weight rapidly, and die shortly after birth due to fluid evaporation resulting from compromised epidermal barrier function. Alternative splicing results in multiple transcript variants encoding different isoforms.
<b>Form</b>	25 mM Tris HCl, pH 7.3, 100 mM glycine, 10% glycerol.
<b>Bio-activity</b>	EMSA assay
<b>Molecular Mass</b>	49.9 kDa
<b>AA Sequence</b>	MAVSDALLPSFSTFASGPAGREKTLRQAGAPNNRWREELSHMKRLPPVLPGRPYD LAAATVATDLESGGA GAACGGSNLAPLPRRETEEFNDLLDLDFILSNLSLTHPPESVA

 Tel: 1-631-559-9269    1-516-512-3133

 Email: [info@creative-biomart.com](mailto:info@creative-biomart.com)     Fax: 1-631-938-8127

 45-1 Ramsey Road, Shirley, NY 11967, USA

ATVSSASASSSSSPSSSGPASAPSTCS FTYPIRAGNDPGVAPGGTGGGLLYGRES  
 APPPTAPFNLADINDVSPSGGFVAELLRPELDPVYIPPQQPQ PPGGGLMGKFVLKA  
 SLSAPGSEYGSPSVISVSKGSPDGSHPVVVAPYNGGPPRTCPKIKQEAVSSCTHLG  
 AGPPLSNGHRPAAHDFPLGRQLPSRTTPTLGLLEVLSSRDCHPALPLPPGFHHPHG  
 PNYPFLPDQMPPQ VPPLHYQELMPPGSCMPEEPKPKRGRRSWPRKRTATHTCD  
 YAGCGKTYTKSSHLKAHLRTHHTGEKPYHCD  
 WDGCGWKFARSDDELTRHYRKHTGHRPFQCQKCDRAFSDHLALHMKRHFTRTR  
 PLEQKLISEEDLAANDILDYKDDDDKV

<b>Purity</b>	> 80% as determined by SDS-PAGE and Coomassie blue staining.
<b>Stability</b>	Stable for 12 months from the date of receipt of the product under proper storage and handling conditions. Avoid repeated freeze-thaw cycles.
<b>Storage</b>	Store at -80 centigrade.
<b>Concentration</b>	>50 ug/mL as determined by microplate BCA method.
<b>Preparation</b>	Recombinant protein was captured through anti-DDK affinity column followed by conventional chromatography steps.
<b>Protein Families</b>	Adult stem cells, Embryonic stem cells, ES Cell Differentiation/IPS, Induced pluripotent stem cells, Transcription Factors
<b>Full Length</b>	Full L.

## GENE INFORMATION

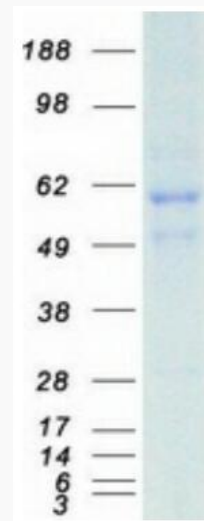
<b>Gene Name</b>	<a href="#">KLF4 KLF transcription factor 4 [ Homo sapiens (human) ]</a>
<b>Official Symbol</b>	<a href="#">KLF4</a>

 Tel: 1-631-559-9269 1-516-512-3133

 Email: [info@creative-biomart.com](mailto:info@creative-biomart.com)  Fax: 1-631-938-8127

 45-1 Ramsey Road, Shirley, NY 11967, USA

<b>Synonyms</b>	EZF; GKLF
<b>Gene ID</b>	9314
<b>mRNA Refseq</b>	NM_004235.6
<b>Protein Refseq</b>	NP_004226.3
<b>MIM</b>	602253
<b>UniProt ID</b>	O43474



Coomassie blue staining of purified KLF4 protein.

Tel: 1-631-559-9269 1-516-512-3133

Email: [info@creative-biomart.com](mailto:info@creative-biomart.com) Fax: 1-631-938-8127

45-1 Ramsey Road, Shirley, NY 11967, USA