

# Recombinant Human KLF4 Protein (Leu352-Phe513), N-His tagged

**Cat. No.** KLF4-3260H    **Lot. No.** (See product label)

## SPECIFICATION

<b>Product Overview</b>	Recombinant human KLF4 (Leu352-Phe513) protein fused with the N-His tag was expressed in E. coli.
<b>Species</b>	Human
<b>Source</b>	E.coli
<b>ProteinLength</b>	Leu352-Phe513
<b>Molecular Mass</b>	21.01 kDa
<b>Purity</b>	>90 % as determined by SDS-PAGE.
<b>Notes</b>	For research use only.
<b>Storage</b>	Use a manual defrost freezer and avoid repeated freeze thaw cycles. Store at 2 to 8 centigrade for one week. Store at -20 to -80 centigrade for twelve months from the date of receipt.
<b>Storage Buffer</b>	0.01M PBS, pH 7.4, 0.02 % NLS
<b>Reconstitution</b>	Reconstitute in sterile water for a stock solution.
<b>Shipping</b>	In general, proteins are provided as lyophilized powder/frozen liquid. They are

 Tel: 1-631-559-9269    1-516-512-3133

 Email: [info@creative-biomart.com](mailto:info@creative-biomart.com)     Fax: 1-631-938-8127

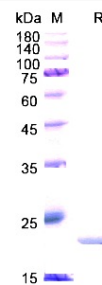
 45-1 Ramsey Road, Shirley, NY 11967, USA

shipped out with dry ice/blue ice unless customers require otherwise.

## GENE INFORMATION

<b>Gene Name</b>	KLF4 Kruppel-like factor 4 (gut) [ Homo sapiens (human) ]
<b>Official Symbol</b>	KLF4
<b>Synonyms</b>	KLF4; Kruppel-like factor 4 (gut); Krueppel-like factor 4; EZF; GKLF; gut-enriched krueppel-like factor; epithelial zinc finger protein EZF; endothelial Kruppel-like zinc finger protein;
<b>Gene ID</b>	9314
<b>mRNA Refseq</b>	NM_004235
<b>Protein Refseq</b>	NP_004226
<b>MIM</b>	602253
<b>UniProt ID</b>	O43474

## SDS-PAGE



Tel: 1-631-559-9269 1-516-512-3133

Email: [info@creative-biomart.com](mailto:info@creative-biomart.com) Fax: 1-631-938-8127

45-1 Ramsey Road, Shirley, NY 11967, USA